



energyya®

STEEL FABRICATIONS CO.

A Division of Energyya Industries



Poles

WELCOME TO ENERGYA POLES!

CONTENTS

Who are we	2
energya – Poles are our passion.....	3
STRAIGHT POLES CONICALLY ROUND	4
STRAIGHT POLES, CYLINDRICALLY STEPPED	5-6
STEEL SLEEVE BY FAR THE BEST	7
FLOOD LIGHT POLES	8
LIGHTING SYSTEMS	9-10
Our Poles	11-12
Poles Assessors	13
Our Design	14 : 16
TECHNICAL SOLUTIONS	17
HOT-DI Galvanizing.....	18 : 21
INSPIRING TECHNOLOGY	22
SERVICE and Shipping	23
Our Vision, Mission& Values	24

WE ARE ALWAYS THERE FOR YOU...

Who are we

OUR CERTIFICATES

**ISO 9001-2008
(KSA)**



**ISO 9001-2008
(Egypt)**



Gaynor-1



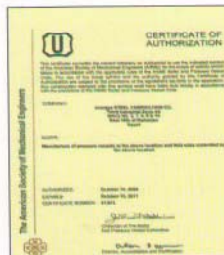
NB



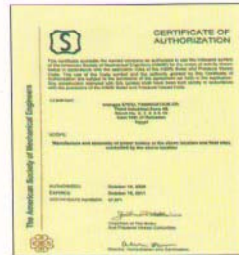
PP Stamp



U stamp



S Stamp



R Stamp



PP Stamp



**ARAMCO
Approval**



**SEC
Approval**



**SASO
Certificate**



PASSION

ENERGYA– POLES ARE OUR PASSION

Lighting

The Lighting business unit offers a broad spectrum of pole types. From standard poles to customer-specific solutions, everything comes to you from the same source. Whether the products are design-oriented or functional – from consultation through to structural analysis – we go by what the customer desires. We provide you with support for the details involved in pole footings and in connecting the lamps, floodlights or cameras to the load-bearing system. Besides steel as a raw material, we also offer concrete and GRP and can therefore meet your needs adequately.

Energy

In the Energy business unit, we offer a broad product portfolio for all voltage levels. Whether for concrete, steel or hybrid solutions (steel with GRP, concrete with steel) – what is of the essence to us is providing every customer as well as every location/route with a design that matches the specific circumstances. From routing considerations to footing/base solutions, traverses, assemblies and even on-site project management. We accompany our customers as a consultant until they have achieved their goals.

Communications

The Communications business unit designs and produces pole and roof stations for mobile communications customers. We offer complete solutions from a single source, from initial operation of the station to its subsequent service needs, be they inspections, swaps or software updates. This reduces the interfaces and expense for the customer when coordinating the various trades and services necessary for the smooth construction and efficient operation of mobile communications stations. We possess the required know-how, from

Surfaces & Design

energya-poles is the expert in special surface finishes. Give your poles an innovative finish. Whether it is a silky gloss, coarse or fine-textured finish required, we are flexible in turning your wishes into reality. Special anti-graffiti or anti-poster surface finishes ensure that nothing sticks on your pole – except for its beautiful appearance.

Mobility

The Mobility business unit rail, road, airport, seaport – provides its customers with high-tech solutions. Be it railway poles for high-speed routes or the most reliable lowering systems for airports – extremely high demands such as these have to be met reliably. Here as well, for the sake of the best solution for our customer, we resort to pre-stressed concrete, steel or, for railway crossing barriers, ultra-light GRP material.

Buildings & Security

In architecture, poles become columns. Design columns or storey supports – they all have one thing in common: extremely high load-bearing capacity combined with a slender form. We make it possible to achieve greater visibility and new design potential. World-renowned buildings have already put this to use, applying new design concepts. energya is a long-term system partner in all of its business units

– from the design phase to implementation. We put our decades of experience to good use for the benefit of our customers.



STRAIGHT POLES, CONICALLY ROUND



The conically round lighting pole consists of a shaped steel sheet that has been longitudinally welded, has a minimum steel quality of S235JR and has been hot-dip zinc plated as per DIN EN ISO 1461.

The pole has been specifically and statically designed and adapted for the lamp and number of lamps per pole. The poles are made with a door cut-out that has a steel door installed and a triangular lock made of V2A, edge length 12 mm.

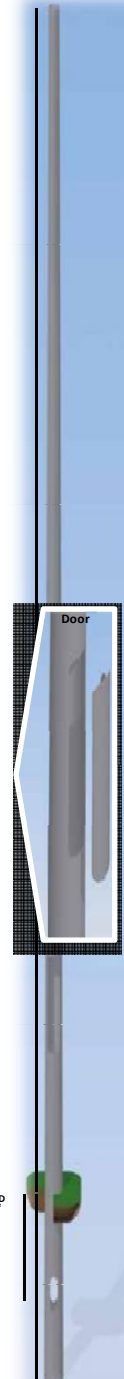
As a manufacturer, Energya-poles has all of the necessary production certifications: Verification of suitability DIN 18800 / EN 40-5; verification of origin as per DIN 1990; EN ISO 5817; certificate DIN EN ISO 9001; welder test DIN EN 287-1/Part 1 steels DIN EN 1418; environmental management system certification as per DIN ISO 14001 : 2009.

It is possible to mount a cable junction box using a plain earthing link and sliding nuts inside the pole. There are two openings opposite each other in the buried base for feeding the cable.

All poles with a standard door 85 x 400 mm in size with a 12 mm triangular lock. Subject to technical modifications.

Abbreviation key: H^1 beam spot height; H^2 underground length; D^1 pole top diameter; D^2 foot diameter; Conicity uniform tapering of the pole diameter

**Maximum load / area exposed to the wind: Calculation through wind zone 2. This is only meant as an orientation value and cannot be applied as if it were definitive.*



STRAIGHT POLES, CYLINDRICALLY STEPPED

Straight pole, cylindrically stepped – programme in stock

The cylindrically stepped steel light pole is dished and welded all around. The steel has a minimum quality as per S235 JR and is hot-dip zinc plated on the interior and exterior as per DIN EN ISO 1461.

The cylindrically stepped pole has also been individually and statically designed and adapted for the lamp and number of lamps per pole. Moreover, there is a standard steel door with a triangular lock on the pole. It is possible to mount a cable junction box using a plain earthing

link and sliding nuts. There are two openings opposite each other in the buried base for feeding the cable.

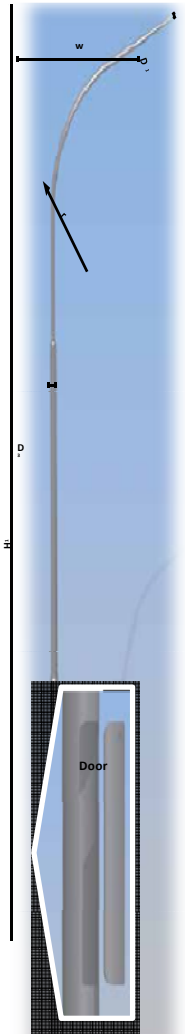
As the manufacturer, eenerga-poles has all of the necessary production verifications: Verification of suitability DIN 18800 / EN 40-5; verification of origin as per DIN 1990; EN ISO 5817; certificate DIN EN ISO 9001; welder test DIN EN 287-1/Part 1 steels DIN EN 1418; environmental management system certification as per DIN ISO 14001: 2009.

All poles with a standard door 85 x 400 mm in size with a 12 mm triangular lock.

Subject to technical modifications. Abbreviation key: H^1 beam spot height; H^2 underground length; D^1 diameter of segment 1; D^2 diameter of segment 2; D^3 diameter of segment 3; L^1 length of segment 1; L^2 length of segment 2; L^3 length of segment 3
Maximum load / area exposed to the wind: Calculation through wind zone 1. This is only meant as an orientation value and cannot be applied as if it were definitive.



POLES WITH CIRCULAR CURVED BRACKETS – CONICALLY ROUND & CYLINDRICALLY STEPPED



The conical steel pipe pole with circular curved brackets or the cylindrically stepped pole with a single circular curved bracket is welded with a minimum steel quality of S235 JR and hot-dip zinc plated on the interior and exterior as per DIN EN ISO 1461. The steel door on the pole has a triangular lock. It is possible to mount a fuse box using a plain earthing link and sliding nuts. There are two openings opposite each other in the buried base for feeding the cable.

As the manufacturer, Energya-poles has all of the necessary production verifications: Verification of suitability

DIN 18800 / EN 40-5; verification of origin as per DIN 1990; EN ISO 5817; certificate DIN EN ISO 9001; welder test DIN EN 287-1/Part 1 steels DIN EN 1418; environmental management system certification as per DIN ISO 14001 : 2009.

STEEL SLEEVE BY FAR THE BEST

The steel sleeve, with a length of 400mm at the ground entry point, offers additional corrosion protection against environmental and mechanical influences (e.g. mowing and sweeping machines, snow removal services, salt water and dog urine). Thanks to the special technical feature, whereby energya - poles install the sleeve with a gap, both the sleeve as well as the pole are double-plated with zinc in this area and ideally protected against corrosion.



FLOOD LIGHT POLES – WE TURN NIGHT INTO DAY FOR YOU

Perfect conditions for the athletes, ideal visual conditions for all the spectators and brilliant light for television broadcasts – these are the primary challenges for illuminating sports facilities. Optimally placing and aligning the spotlights results in lighting that is virtually non-glare and uniform.

energya-poles offers complete solutions for stadiums and sports facilities of all categories and sizes – from the football fields of local sports clubs to arenas for top sporting events on an international scale.

It is particularly in the area of winter sports that the site often requires the operator to open up and develop hard-to-access terrain. If necessary, the poles are provided with a special attachment for helicopter installation to allow the poles to be positioned accurately.

Up to 20 meters in length, floodlight poles made of steel (conically round) from our standard pole pro- grime can be used with traverses including one to six or more floodlights.

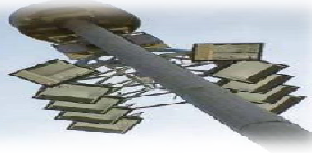
All poles with a standard door 155 x 500 or 700 mm in size with a 12 mm triangular lock. Subject to technical modifications.

Abbreviation key: H¹ beam spot height; H² underground length; D¹ pole top diameter; D² foot diameter

*Maximum load / area exposed to the wind: Calculation through wind zone 2. This information is only meant as an orientation value and cannot be applied as if it were definitive.



INNOVATION



LIGHTING SYSTEMS WITH SWISS PRECISION

Lighting equipment from EuroPoles proves to be compelling the world over thanks to the efficient lowering system designed in. The floodlight brackets are lowered to the ground for maintenance and service. This not only reduces costs, but also makes for rapid and safe handling even during on-going operations.

energya-poles lighting systems combine Swiss precision engineering with Made in Egypt pole technology. They are the perfect solution for any location where artificial light is needed for large areas.

energya-poles is the global technology leader in the development, production and assembly of low-maintenance lighting equipment as well as in its inspection. Our lowering system is based on two decades of innovation and experience in the construction of cable railways. Lowering systems are primarily used where there is little room, thus making it very difficult to maintain lighting and camera poles.

Repair or cleaning of floodlight lamps therefore does not cause any restriction on moving traffic. Repairs and maintenance can be carried out trouble-free and relatively quickly on the ground without using a cherry picker.

Setting up a cherry picker or a truck-mounted crane would take longer and cost more. What is more, the climbing fixtures on the pole can be done away with.

energya-poles has just the right load-bearing system for every Application

NivaLift Indoor

- | Maintenance without a scaffold
- | Lighting, CCTV (video monitoring), antennas, etc.
- | Can be operated by one person

Light Lowering Device (LLD)

The LLD is a lighting lowering system for indoor areas. No matter how high your hangar or hall is you will not need any special equipment such as risers or lifting platforms for performing work on the lamps.

INNOVATION



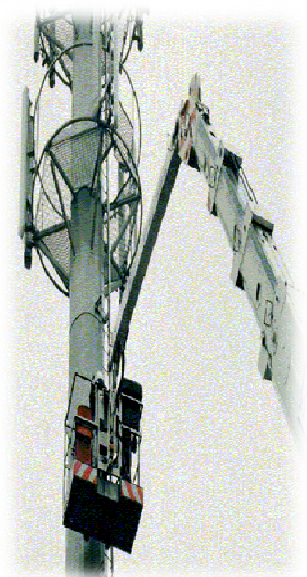
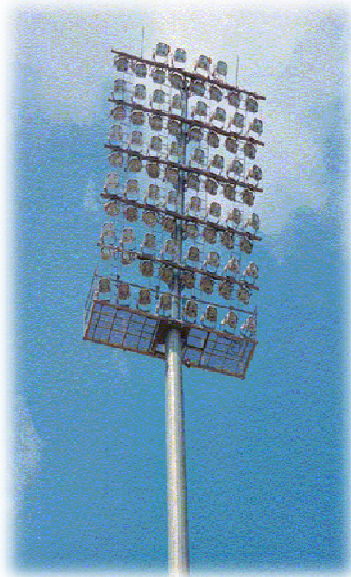
LIGHTING SYSTEMS WITH SWISS PRECISION

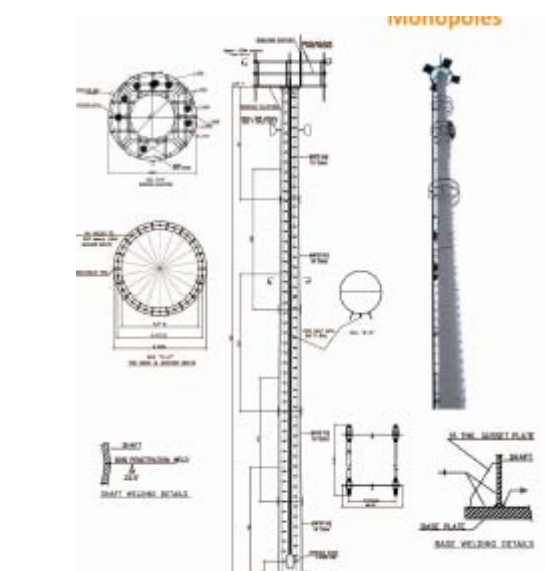
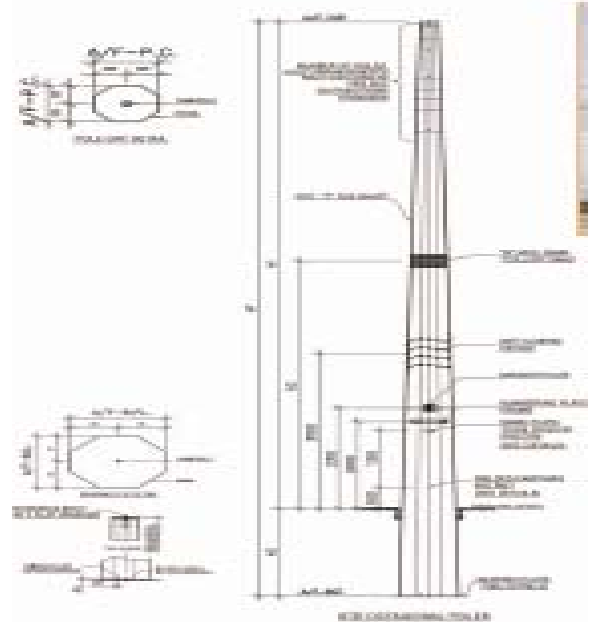
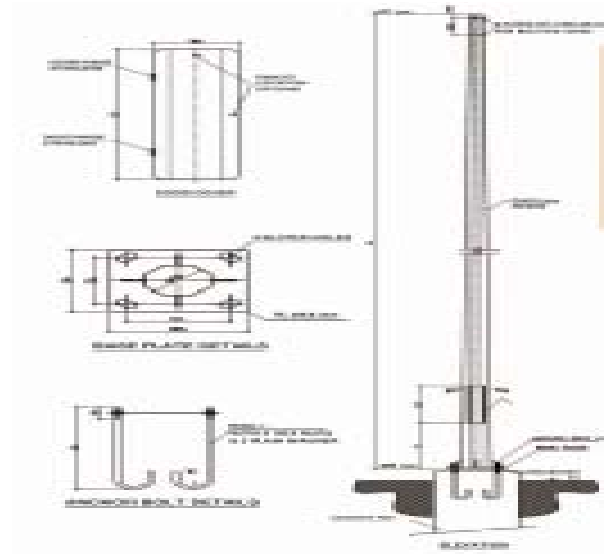
Niva Lift

- | Lifting power of up to 3,500 kg Up to 50 m in height 1 wire – guide rail Brake with double safety, Up to 80 plug contacts Lighting, CCTV (video monitoring), antennas, etc.
- | Stainless steel – aluminium
- | Can be operated by one person
- | Not necessary to tip the poles
- | No extensive apron closures
- | No downtimes
 - » operations continue without any restrictions
- | One-sided projection possible without a counterweight
 - » can be lowered even in windy conditions
- | Floodlight bracket can be freely designed
- | Can be operated by one person
- | Power supply via a plug contact
 - » not necessary to lead cables
- | Easy to connect additional equipment (e. g. cameras, airport obstacle lighting, loudspeakers, etc.)
- | Can be used in high-ceilinged halls and buildings such as aircraft hangars, trade fair halls, sports facilities, stadiums and factories.
- | Up to 20 m in height
- | Guided by a gear rod – locking mechanism
- | Up to 16 plug contacts
- | Lighting, CCTV (video monitoring), antennas, etc.
- | Stainless steel aluminum
- | Can be operated by one person

Systems for

- | Apron lighting at airports
- | Airport solutions for safe landings
- | Stadiums
- | Freight zones
- | Harbours
- | Streets





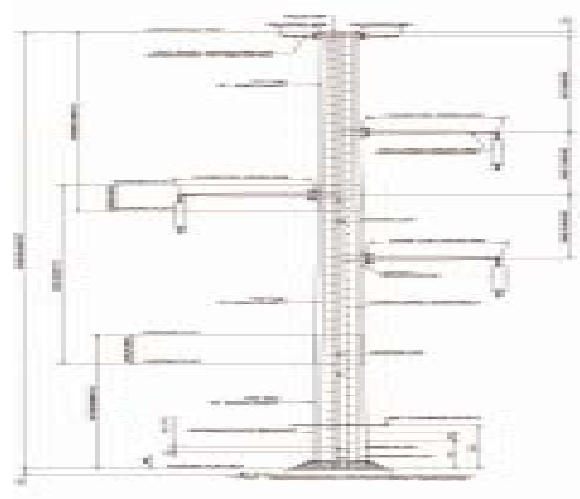
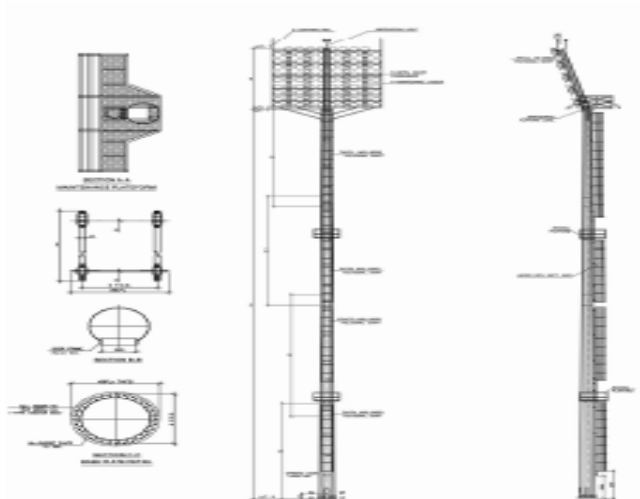
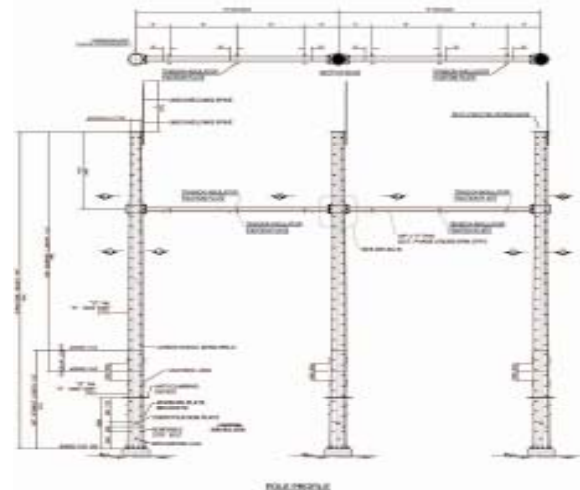
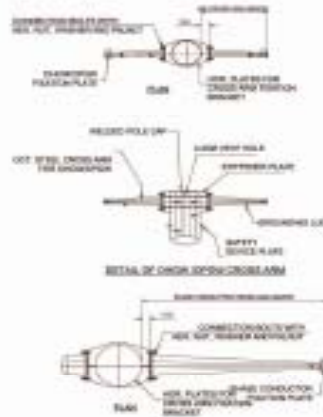
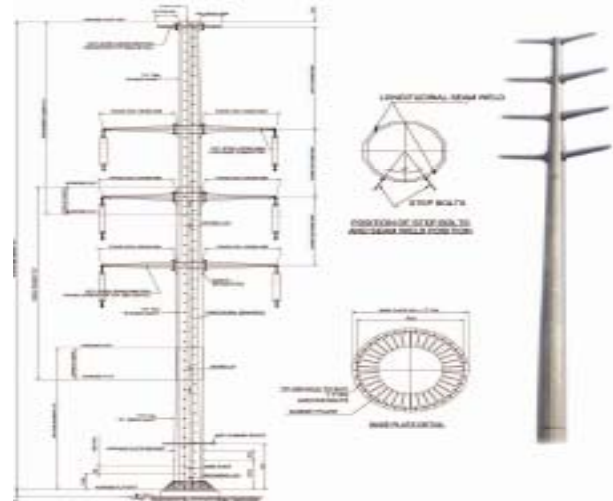
POLE ACCESSORIES

Supplied unassembled



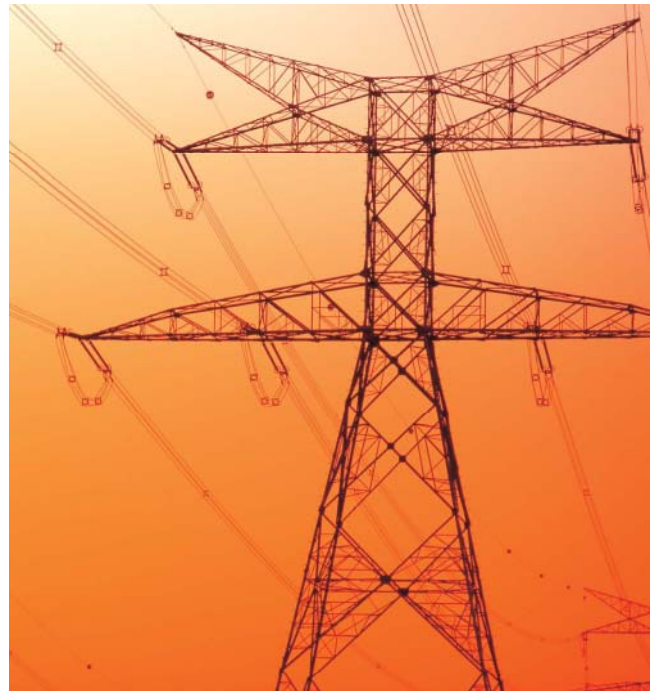
DESIGN

DESIGN SOLUTIONS ROOM FOR (NEARLY) ANY IDEA



DESIGN

DESIGN SOLUTIONS ROOM FOR (NEARLY) ANY IDEA



DESIGN

DESIGN SOLUTIONS ROOM FOR (NEARLY) ANY IDEA



ENGINEERING

TECHNICAL SOLUTIONS FUNCTIONAL TO THE LAST DETAIL



HOT-DIP ZINC PLATING CORROSION PROTECTION

Corrosion protection EN 40-5:2002 permits hot-dip zinc plating. The surface condition requirements and plating thickness here are definitively based on DIN EN ISO 1461.

Definition

Hot-dip zinc plating involves the production of overlays of zinc and iron/zinc alloys by dipping the prepared steel in melted zinc.

Appearance

Hot-dip zinc plating is long-term corrosion protection that does not strive to achieve a uniform and decorative appearance. When inspected, all essential surfaces on the zinc-plated material must be free from thickened areas, bubbles, rough spots, zinc points or non-plated patches. Flux and zinc ash residue are not permissible either.

Since the roughness of the steel surface affects the thickness and constitution of the zinc plating, however, surface irregularities of the base material will normally still be visible after hot-dip zinc plating.

Reactive elements in the base material, e. g. silicon and phosphor, can also affect the thickness and appearance of zinc overlays. Different proportions of these elements

result in uniform and/or dark-grey overlays that can be either thinner or thicker than normal.

Thickened zinc areas are not permissible if they interfere with the proper use of the steel part; however, they do not affect corrosion resistance.

The occurrence of dark or light-grey patches (e. g. a net-shaped pattern of grey areas) or a slight surface unevenness is no reason to reject the part. This is also true for white rust that can form due to storage in

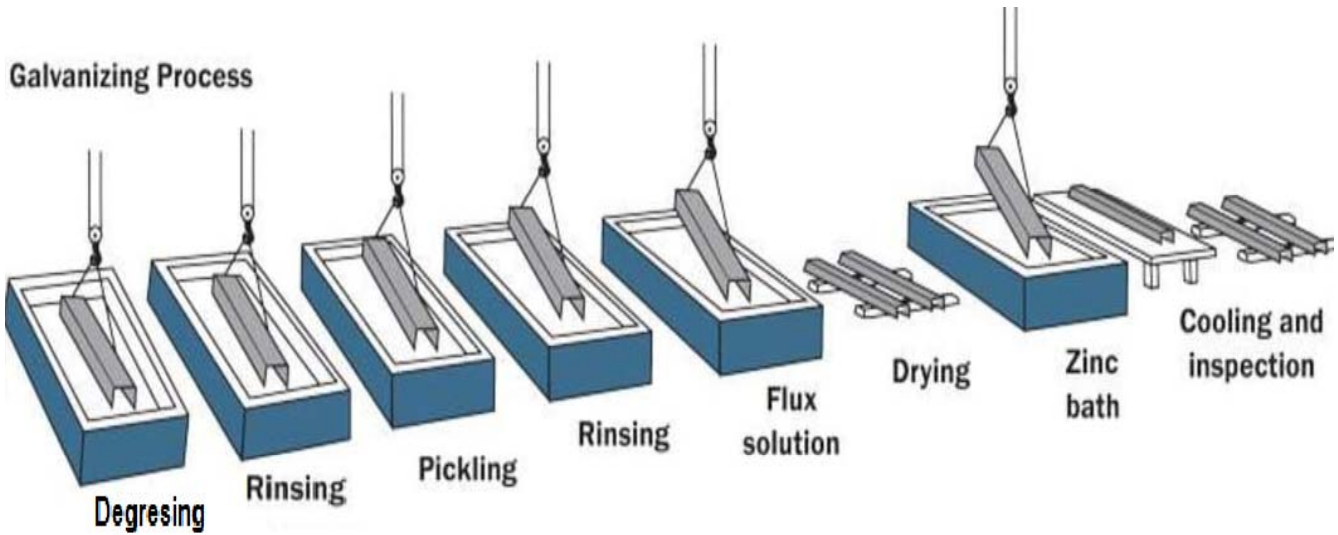
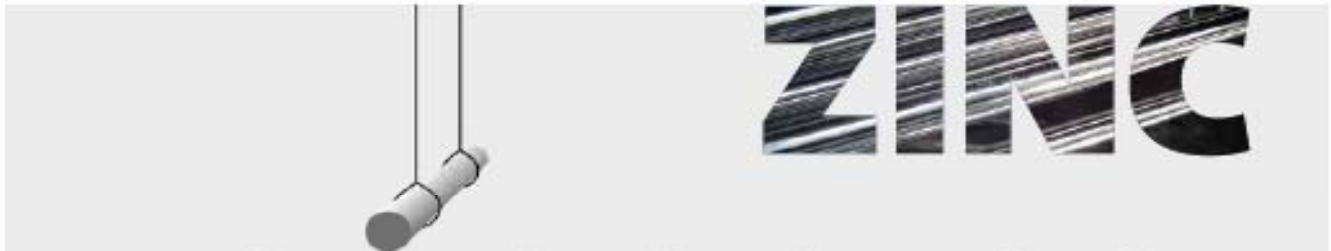
moist conditions after the hot-dip zinc plating process, provided that the zinc overlay still has the required minimum thickness.

In each instance, any requirements concerning appearance that go beyond the provisions of EN ISO 1461 are to be arranged separately before the order is placed.

Plating thickness

The local plating thickness may only be tested on the defined reference surfaces as per 6.2.3 (DIN EN ISO 1461).

HOT-DIP ZINC PLATING CORROSION PROTECTION



HOT-DIP ZINC PLATING CORROSION PROTECTION

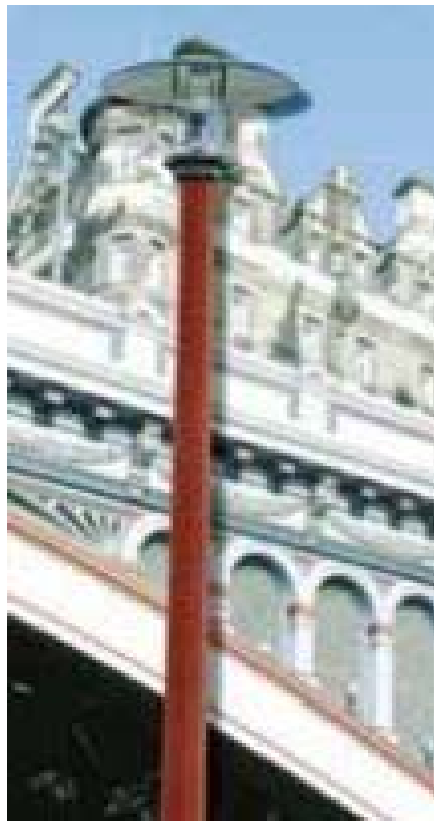
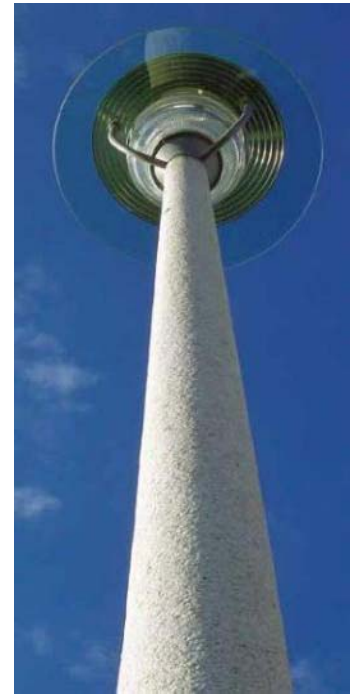


HOT-DIP ZINC PLATING CORROSION PROTECTION



CONCRETE

INSPIRING TECHNOLOGY AND INNOVATIVE CAPACITY



SERVICE – YOUR WISHES ARE OUR POSSIBILITIES

What is special about your collaboration with energya-poles is the comprehensive service for your order. We at energya-poles are always working hard to ensure that customer requirements are met and solutions are being found – both with respect to design as well as meeting the customer's budget.

LOGISTICS – ON LOCATION QUICKLY AND RELIABLY

Providing the right quantity, at the right quality and at the right location – that is our philosophy.

energya-poles is your partner when reliable and rapid deliveries are at stake. As a service-oriented market leader, we deliver your poles upon request directly to your warehouse or construction site in the desired design

We assure you of short distances and quick execution. In our central warehouses in New market and Konin (Poland), we have over 200 different kinds of poles and pole accessories in stock. We thus guarantee you quick delivery times. Even country-specific pole types are easily available.

Whether we deal with corporate groups or small businesses – our customers are always our top priority, which is why we process even small order quantities reliably. Our own forwarding agency as well as third-party forwarding agencies reviewed by us guarantee you reliable delivery performance. Our lorries are generally equipped with a crane; the poles are therefore

easily unloaded by our driver. energya-poles organizes the logistics for special deliveries of popular straight pole types directly to your construction site – anywhere



Our Vision

To be the leading Hot Dip Galvanization Factory in Middle east.

Our Mission

- To Present world class service to our clients.
- To provide the best services quality on time at competitive prices.
- To reach the highest possible levels of customer satisfaction.
- To improve our services, and remain competitive.

Our Values

- High standards of integrity
- Outstanding customer services.
- On time, in full delivery.
- Products superiority.
- High Levels of self-esteem, and trust.



www.energyasteel.com

Factory:
Industrial Zone A6 East 10th of
Ramadan, Egypt
Tel: +20 15 412239 – 412 249
+20 10 0020 133
Fax: +20 15 412 236

Head Office:
98 a Hassan Ma'moun St, Nasr City
Cairo, Egypt
Tel: +20 222 706 306
+222 714 631
Fax: +20 222 752 701