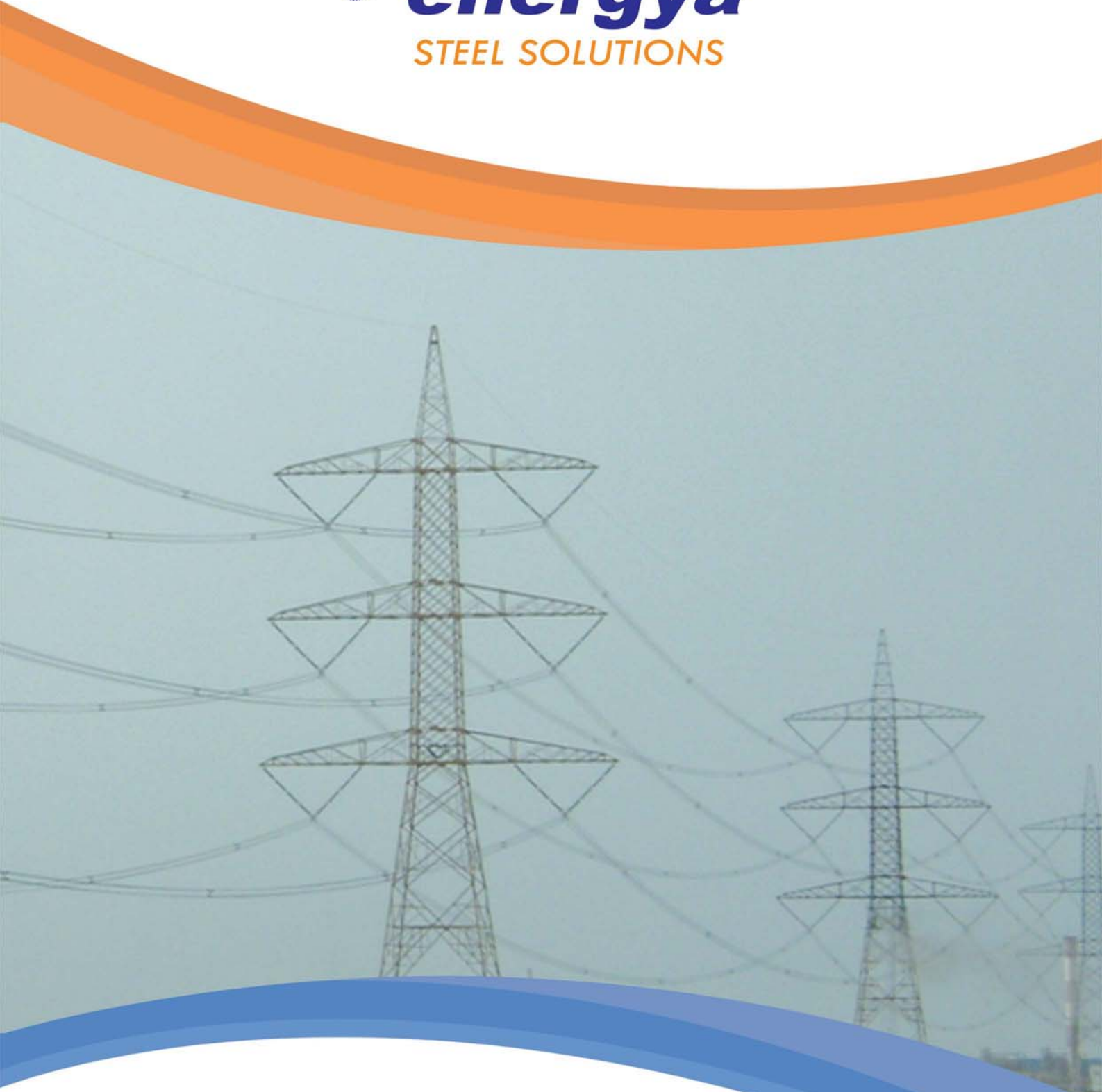


TOWERS



Satisfying Your Project Needs

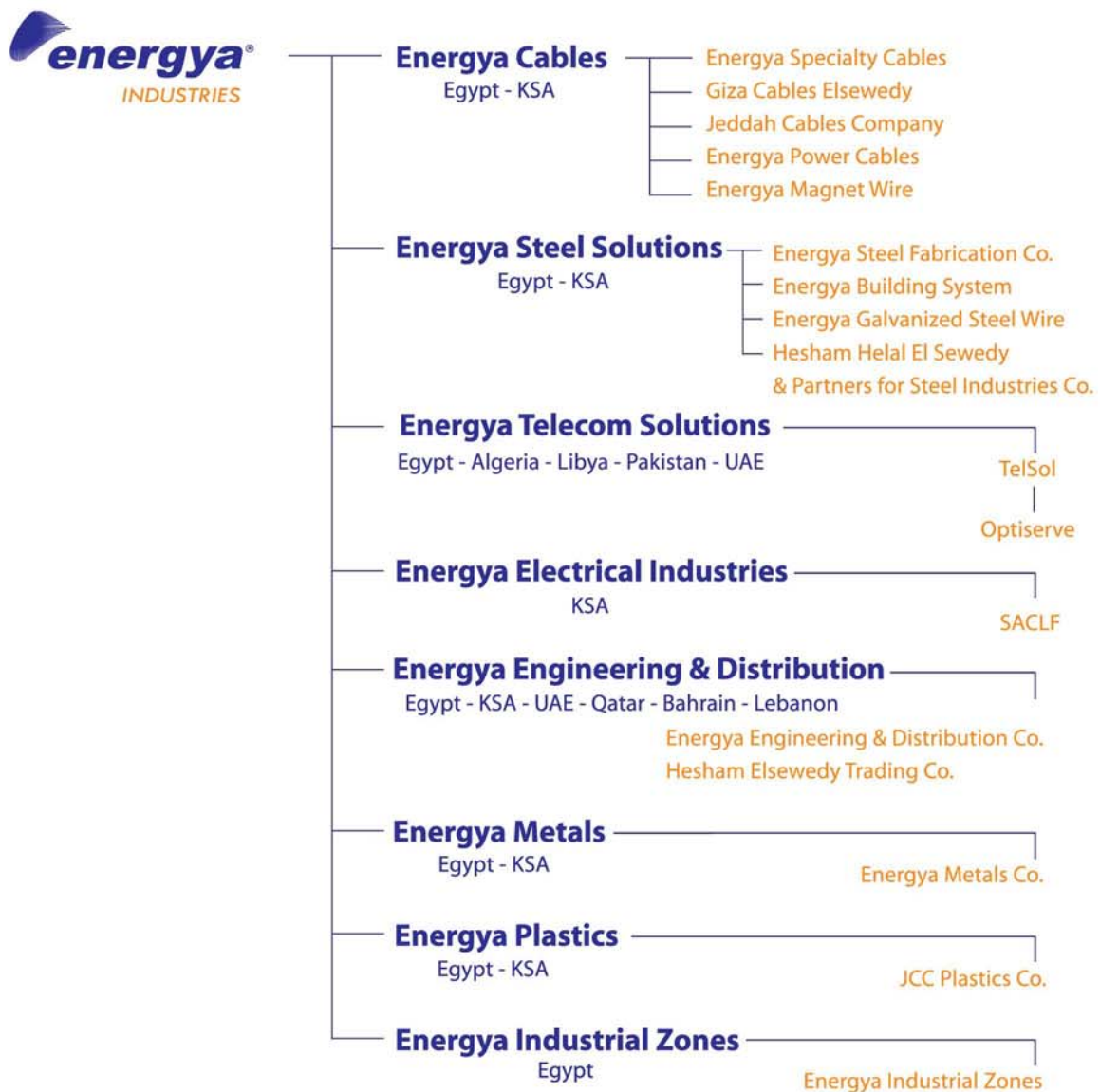


elsewedy **HELAL**®

➤ About US	6
➤ Production Process	8
➤ Galvanization Process	10
➤ Inspection Test	11
Technical Details	
➤ Double Circuit Configuration Towers	14
➤ Single Circuit Configuration Towers	16
➤ Special Type Configuration Towres	18
➤ Communication Towers	20
➤ Gantry's Configuration	22
➤ Double Circuit Confituration Towers	24
➤ Single Circuit Configuration Towres	26

Corporation

Energyya Industries (formerly Elsewedy Industries) is a Company of Helal Elsewedy Holding which is considered as one of the leading holding companies in the region. Energyya Industries is a diversified group of companies under which are eight divisions that includes: Cables manufacturing, Steel fabrications, Telecommunications solutions, manufacturing of Electrical material, Copper rods, manufacturing, Industrial Zones and distribution of electrical materials in the region. The diagram below shows the group of companies and its divisions.



Companies Scope of Work



Production & Fabrication of Steel Structures, Plate Works, Transmission Towers, Telecommunications Towers, Lighting Poles, Distribution Poles, High Mast Hot Dip Galvanization, Spare Parts for Industrial Products, Building System, Gratings & Engineering Design for the related works.



Production & Installation of quality Telecommunication Cables, Low, Medium, High & Extra High voltage Power Cables up to 400KV in copper & aluminum, Fiber Optic Cables, Building Wires, Instrumentation Cables, Fire Resistant Cables, Control Cables, Signal & Specialty Cables. All are produced in various types & sizes with its accessories.



Provide integrated solutions for communication & data transmission of Fiber Optic & Copper Network (OSP) as turn-key solution, Microwave solution turn-key, & networking & related hardware.



Manufacturing of Industrial & Commercial lights such as flood lights, Street Lights, Decorative Lights, Functional & Commercial Fluorescent Lights. Manufacturing of Wire Harnesses & GRP with a long range of sizes from 3 meters. up to 14 meters.



Distribution of low, medium, high voltage Cables, Control & Specialty Cables, Building Wires, THHN Wires, Flat Wires, Flexible Wires, Cables Accessories, LV Switchgears, LV & MV Substations, Outdoor & Indoor Fixtures, Cable Management Wiring Devices & Transformers.



Production of continuous cast copper rods of 8 mm, 10.5 mm & 12.5 mm diameter rods suitable for Telecommunications cables, Power cables, magnet wires & transformers strips manufacturing.



Production of PVC, XLPE & Maintenance.



Development, Marketing, Management & Maintenance.

About US

Energyya Steel Solutions was founded to meet the increasing demand for Steel Poles products, especially those for heavy industrial projects.

Energyya Steel Solutions plant is equipped with the latest technology & managed by world class engineering & technical team

Vision

To be best in-class in the engineering, steel fabrication and contracting business.

Mission

Our mission is to grow into a world class integrated Steel company, diversifying new products, services and markets. Also ensure:

- Offer customer driven total solutions.
- High level of business integrity.
- Outstanding customer services.
- Always on time delivery.
- Products superiority.
- High level of self esteem & trust.
- Continuous improvement of our products.
- Maximize profit over the long term.

Quality Policy

energyya strives to understand the expectation of each customer external & internal and meet their agreed upon requirements. We are committed to continuously improve our quality culture and process, we must:

- Do the work right first time, every time.
- Empower our employees to respond to each customer needs on time
- Build high performance team.
- Have effective & open communication to ensure the highest cooperation.
- Provide our employees with safe environment.

energyya® environmental friendship Policy
Keep Environment Clear
..... Keep Humans Healthy





Production Process

Tower Production Line CNC Machines



CNC Plate Punch Machine.



CNC Plate Flame Cutting Machine.



Plate Shear Machine



Galvanization Process

Protective Coating

All Angles & Plates are Galvanized according to the International Standards.

Pre -Treatment Process



Galvanization Kettle



Largest & Modernised Galvanizing Plant In the Middle-East Kettle Dimensions 16x2 x 2.75 M
Production Capacity 50,000 Tons/Year
One Dipping Capacity 10 Tons

Inspection Test

The materials as per International Standards & Test Requirements.



Proto Assembly of the Fabricated Materials according to Shop Fabrication Drawings.



Packing & Bundling the finished product as per International Standards



This certificate accredits the named company as authorized to use the ASME Code symbol for construction stamped with the provisions of the ASME Boiler and Pressure Vessel Code.

COMPANY:



This is to certify that
ENERGYA STEEL FABRICATION CO.
Third Industrial Zone A6,
Block No. 5, 7, 8, & 10
EAST 10TH OF RAMADAN,
EGYPT

is authorized to apply the "NB" mark and register boilers, pressure vessels, or other pressure retaining items with the National Board in accordance with its provisions.
The scope of Authorization is limited to items manufactured in accordance with:
ASME
Stamp(s): S U PP
ISSUE DATE: December 17, 2009
EXPIRATION DATE: October 15, 2011

CERTIFICATE OF AUTHORIZATION

The named company as authorized to use the indicated symbol of the American Society of Mechanical Engineers (ASME) for the scope of activity shown below in accordance with the applicable rules of the ASME Boiler and Pressure Vessel Code. The use of the Code symbol and the authority granted by this Certificate of Authorization are subject to the provisions of the agreement set forth in the application. Any construction stamped with this symbol shall have been built strictly in accordance with the provisions of the ASME Boiler and Pressure Vessel Code.

COMPANY:
Hesham Helal El Sewedy & Partners for
(Energyya steel)
Rabigh Industrial Zone
Entrance of Aramco Road,
Rabigh
Saudi Arabia

Design and assembly of pressure piping and
controlled by the above location

January 6, 2010
January 6, 2013
NUMBER: 39,213



بسم الله الرحمن الرحيم

العربية السعودية للمواصفات والمقاييس بأنها رخصت
السويدي وشركاه للصناعات الحديدية المحدودة
نتجت التالية:

عام الهيئة

Certificate of Registration



This is to certify that the
Quality Management System of:

Hesham Helal El Sewedy & Partners
for Steel Industries Co. Ltd.
(Energyya Steel)

Head Office: King Road - Al Haif Trade Center - Next to SAMBA Bank -
Ground Floor - Jeddah - P.O. Box 122747 - KSA.
Factory: Rabigh Industrial Zone - Jeddah / Yanbu Highway - Exit No. 927 -
Aramco Bridge - KSA.

ISO 9001: 2008

has been assessed and found compliant with the requirements of:
Approval is hereby granted for registration on the proviso that the
certification rules and conditions are observed at all times.

Certification Scope:
Design, Procurement, Fabrication and Installation of:
Heavy, Medium and Light Steel Structures.
Process Equipment (Light sheet Metal, heavy Equipment).
Tanks, Pressure Vessels.
Lighting Poles, Distribution Poles and High Masts.
Transmission and Telecommunication Towers.
Machining and Industrial Spare Parts and
Galvanization Services.

Certificate No.: 07110901003
Original Issue Date: 25th January 2009
Issue Date: 28th December 2009
24th January 2012

elsewedy HELAL

Moody International Co.
www.moodyint.com

Industrial Zone, A6 East 10th of Ramadan,
has been assessed and found compliant with the requirements of
ISO 9001:2008
Approval is hereby granted for registration providing the
certification rules and conditions are observed at all times.

Certification Scope:

DESIGN, PROCUREMENT, FABRICATION AND INSTALLATION
TRANSMISSION AND TELECOMMUNICATION TOWERS, HEAVY, MEDIUM
LIGHT STEEL STRUCTURES, PROCESS EQUIPMENT (LIGHT SHEET METAL,
HEAVY EQUIPMENT), TANKS & PRESSURE VESSELS, INDUSTRIAL SP
PARTS, AND GALVANIZATION SERVICES.

Certificate No. 07110802007
Date of Issue: 24th March 2008
Expiry date: 23rd March 2011

Headquarters
External Correspondence

المركز الرئيسي
مراسلات خارجية

الخدمات العامة
قطاع المواد

دائرة شؤون الموردين والمساعدة
المركز الرئيسي (المعمولة) - فود فالت
مكاف ١-٢٦١٩٥١ - فاكس ١-٢٦١٩٤٧

مهندس هشام السويدي وشركاه للصناعات الحديدية
٢٠٢-٦٦٨٢٩٠

الموردين
الموضوع: إسطح بتأهيل منتجات مواد فولاذية

هذا الإشعار على أنه قد تم تأهيل المصنع المذكور في مجال
Octagonal Steel
تحت المراقبة وتقيم حسب مبادئ وإجراءات التزاه بالقرءاء ، هذا وستنجم لكم الفرصة
أهمية مراعيتكم المستمرة لموقع الشركة الرسمي www.se.com.sa
تتصل مع الشركة السعودية للتزاه.



This certificate certifies the named company as authorized to use the ASME Code symbol for construction stamped with the provisions of the ASME Boiler and Pressure Vessel Code. The use of the Code symbol and the authority granted by this Certificate of Authorization are subject to the provisions of the agreement set forth in the application. Any construction stamped with this symbol shall have been built strictly in accordance with the provisions of the ASME Boiler and Pressure Vessel Code.

COMPANY:
Hesham Helal El Sewedy & Partners for Steel Industries
(Energyya steel)
Rabigh Industrial Zone
Entrance of Aramco Road, Exit 927
Rabigh
Saudi Arabia

Design and assembly of power boilers at the above location and field sites controlled
by the above location
This authorization does not cover impregnated graphite)

January 6, 2010
January 6, 2013



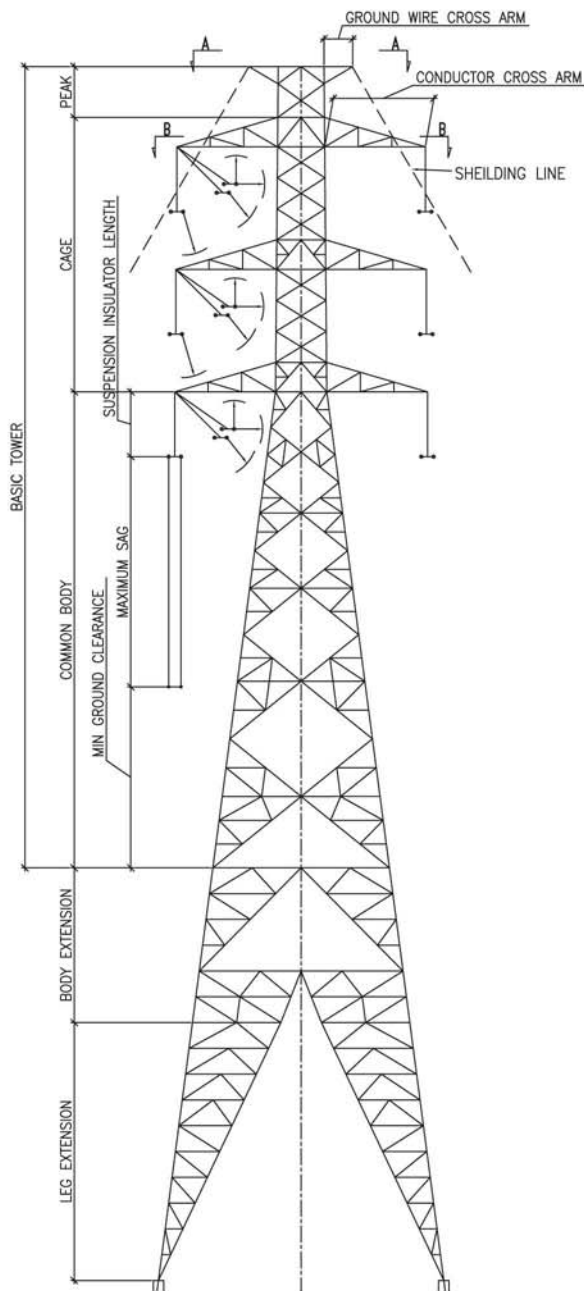
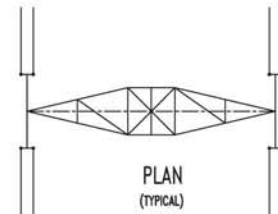
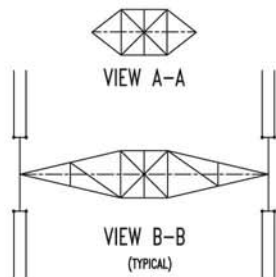
014
the Accreditation Certificate 014
must be returned on request.

October 15, 2008
October 15, 2011
NUMBER: 37,971

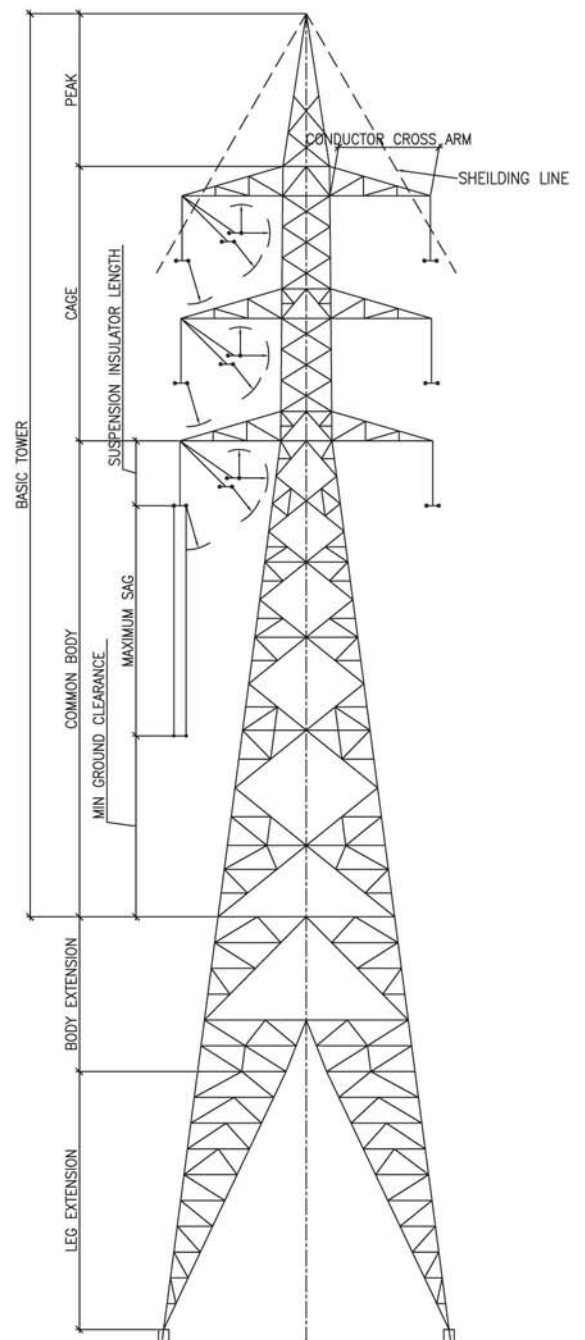
Technical Details

➤ Double Circuit Configuration Towers	14
➤ Single Circuit Configuration Towers	16
➤ Special Type Configuration Towers	18
➤ Communication Towers	20
➤ Gantry's Configuration	22
➤ Double Circuit Configuration Towers	24
➤ Single Circuit Configuration Towers	26

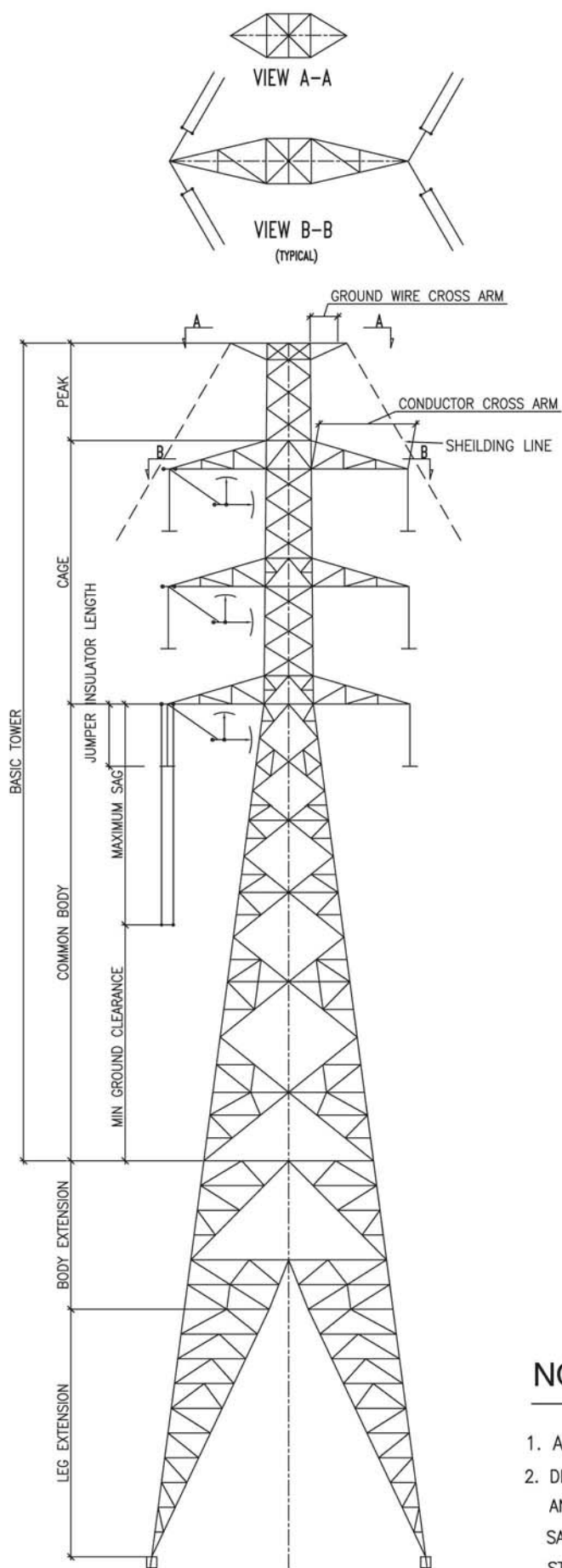
Double Circuit Configuration Towers



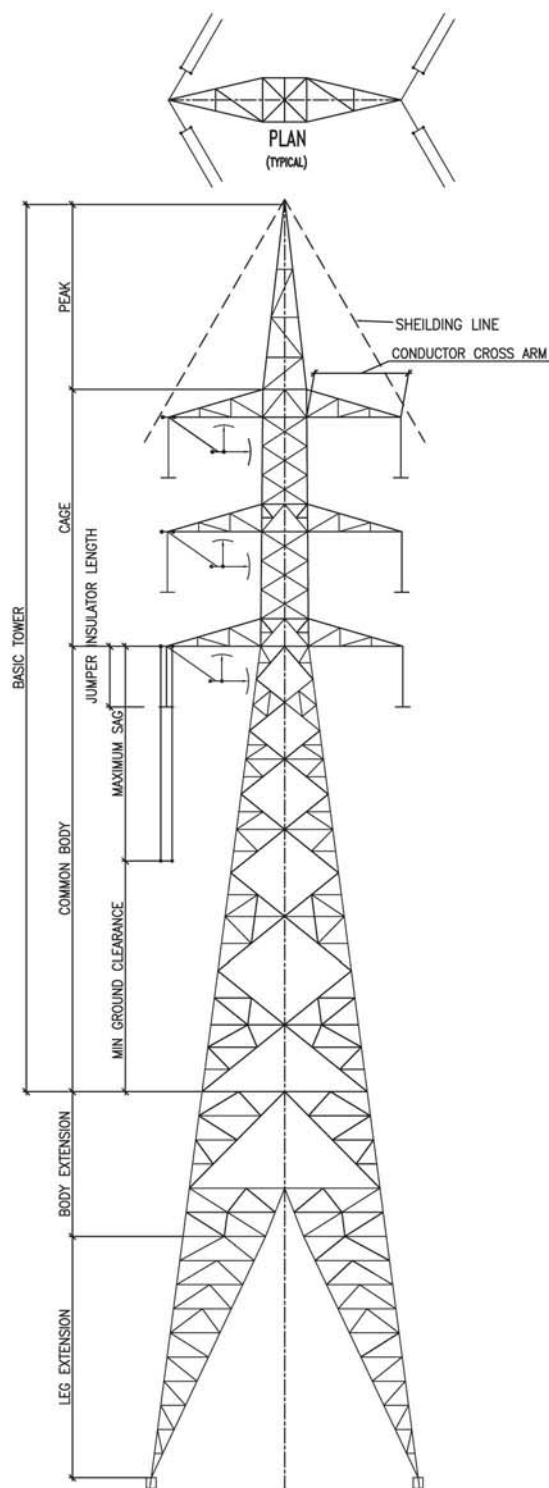
SUSPENSION TOWER WITH DOUBLE PEAK



SUSPENSION TOWER WITH SINGLE PEAK



ANGLE TOWER WITH DOUBLE PEAK

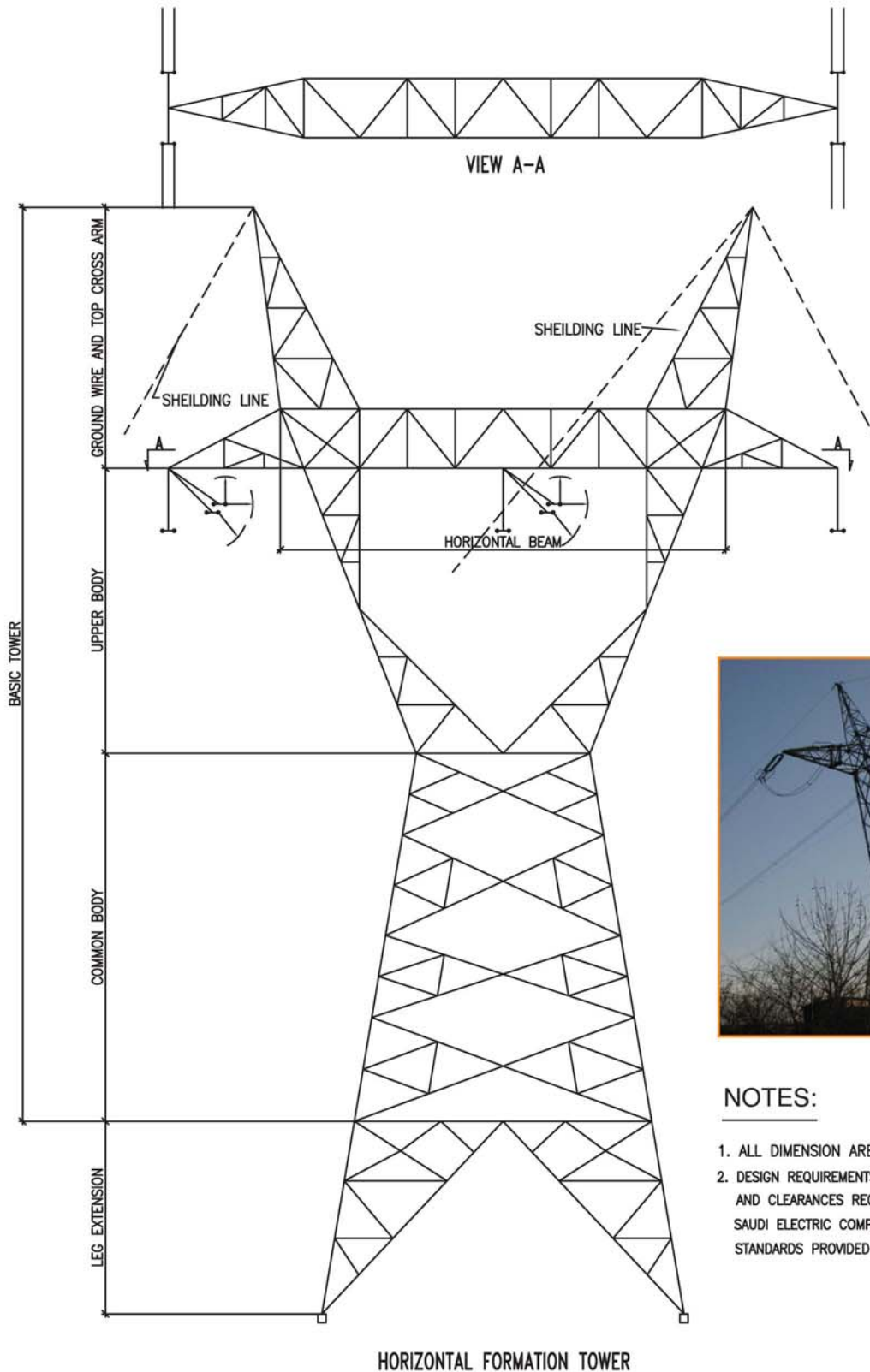


ANGLE TOWER WITH SINGLE PEAK

NOTES:

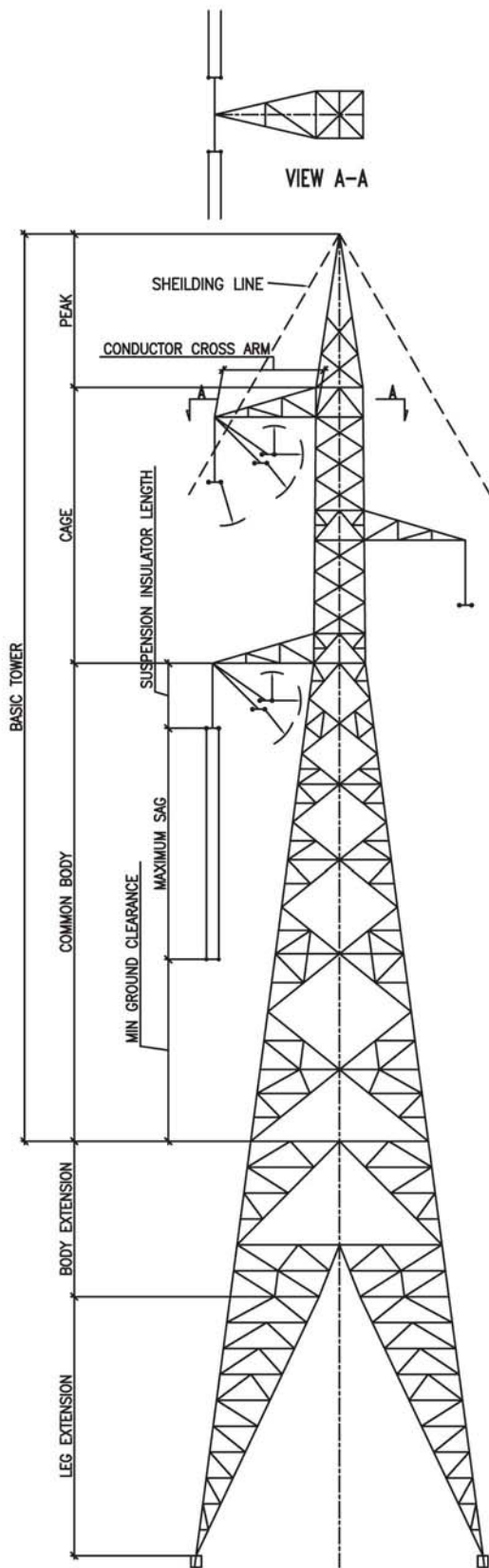
1. ALL DIMENSION ARE IN MILLIMETERS UNLESS OTHERWISE SPECIFIED.
2. DESIGN REQUIREMENTS, TOWER DIMENSIONS, MATERIALS SPECIFICATION, AND CLEARANCES REQUIREMENTS SHALL BE IN COMPLIANCE WITH SAUDI ELECTRIC COMPANY STANDARDS "SEC" AND OTHER RELEVANT STANDARDS PROVIDED BY CUSTOMERS

Single Circuit Configuration Towers

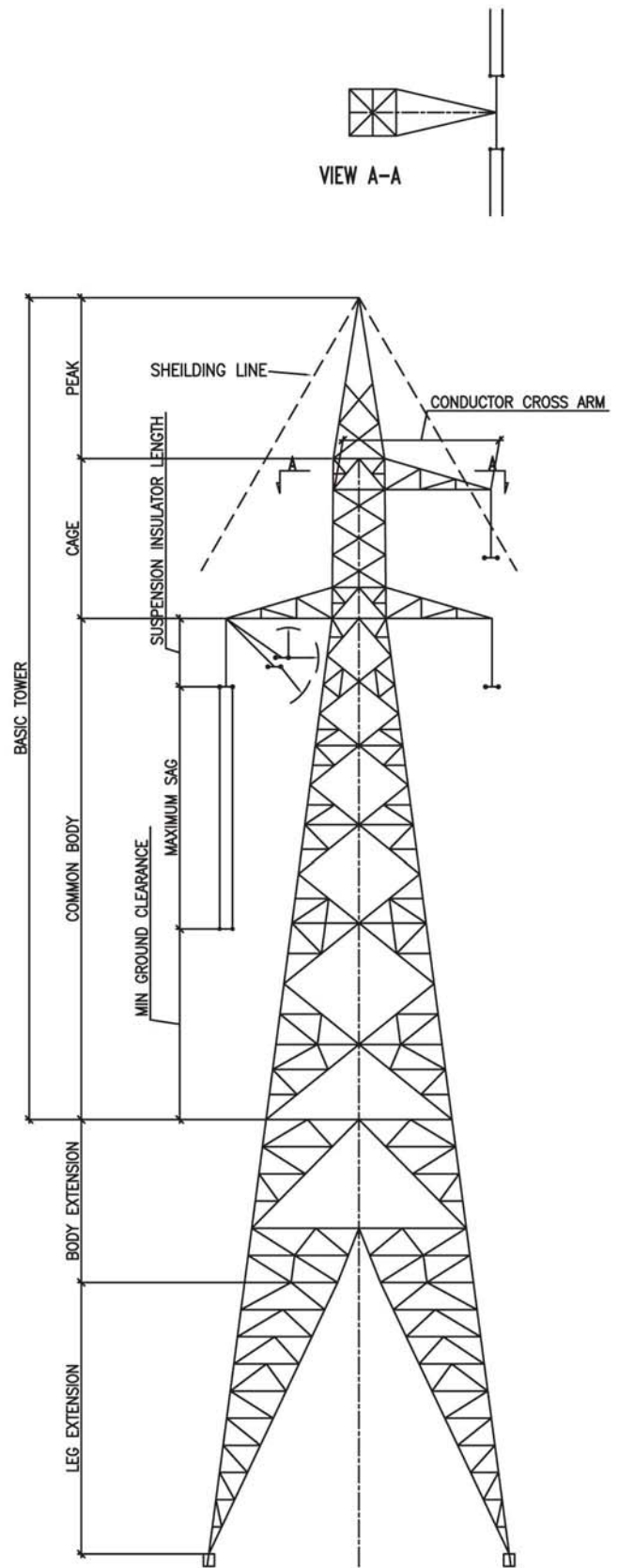


NOTES:

1. ALL DIMENSION ARE IN MILLIMETERS UNLESS OTHERWISE SPECIFIED.
2. DESIGN REQUIREMENTS, TOWER DIMENSIONS, MATERIALS SPECIFICATION, AND CLEARANCES REQUIREMENTS SHALL BE IN COMPLIANCE WITH SAUDI ELECTRIC COMPANY STANDARDS "SEC" AND OTHER RELEVANT STANDARDS PROVIDED BY CUSTOMERS

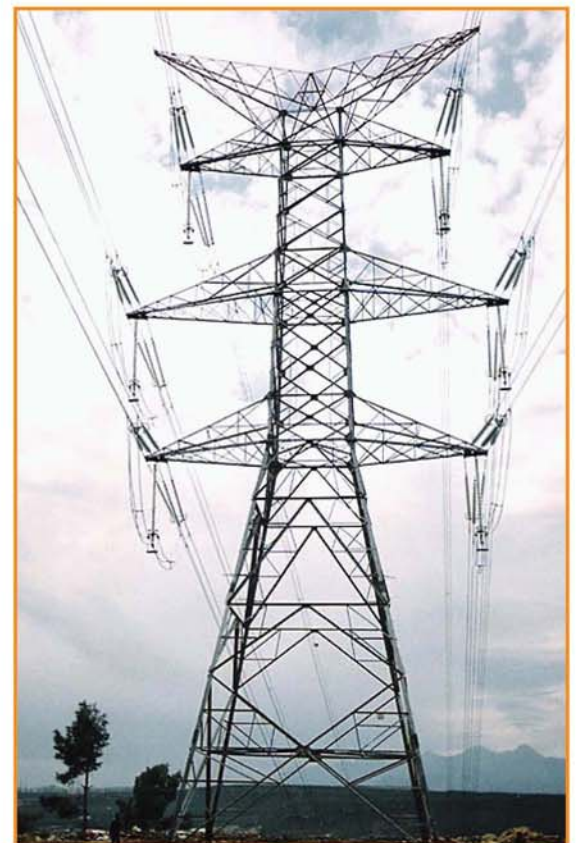
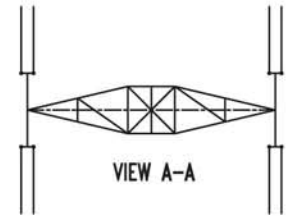
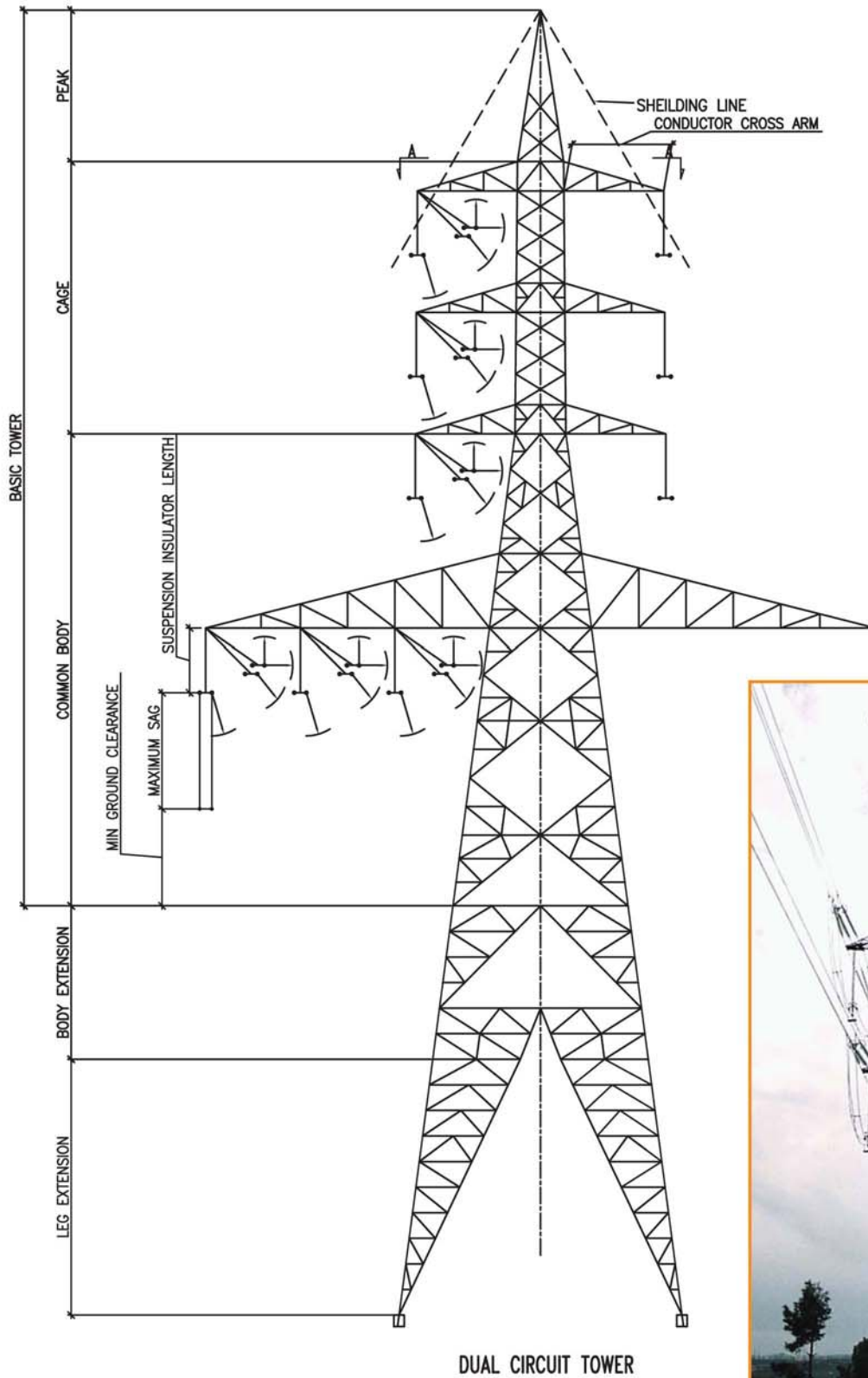


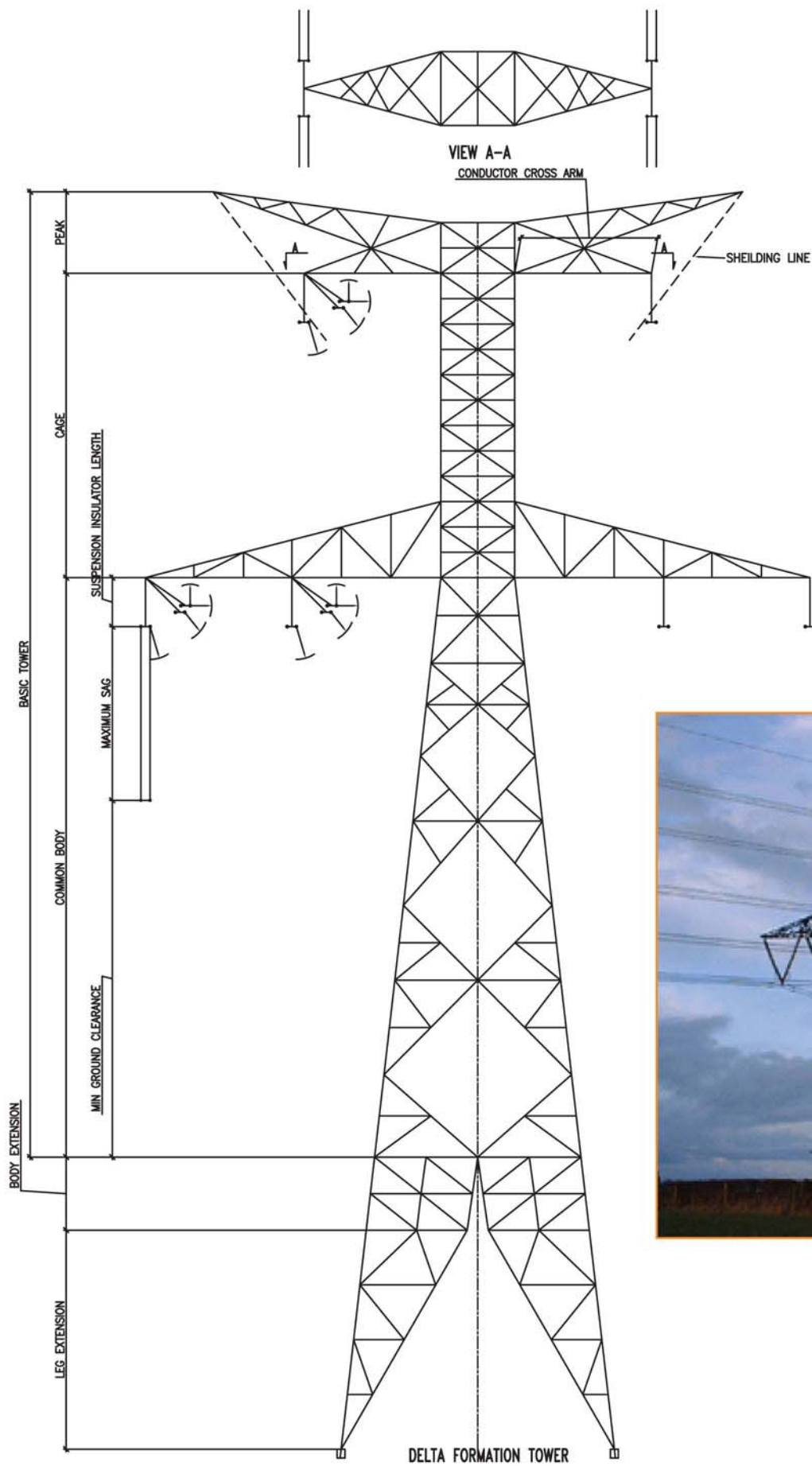
VERTICAL FORMATION



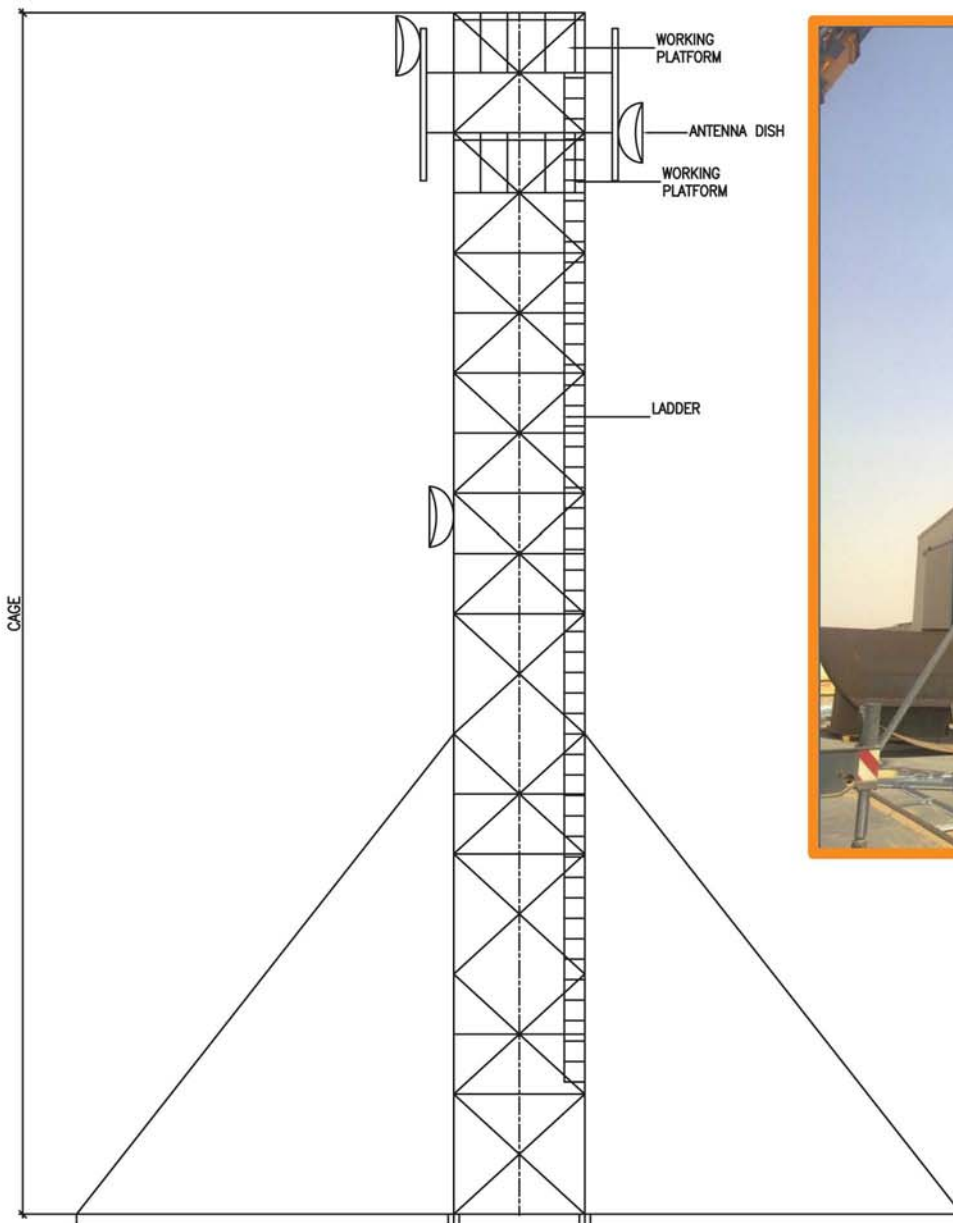
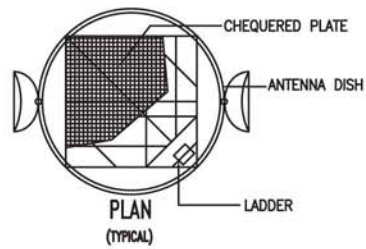
VERTICAL/HORIZONTAL FORMATION

Special Type Configuration Towers





Communication Towers

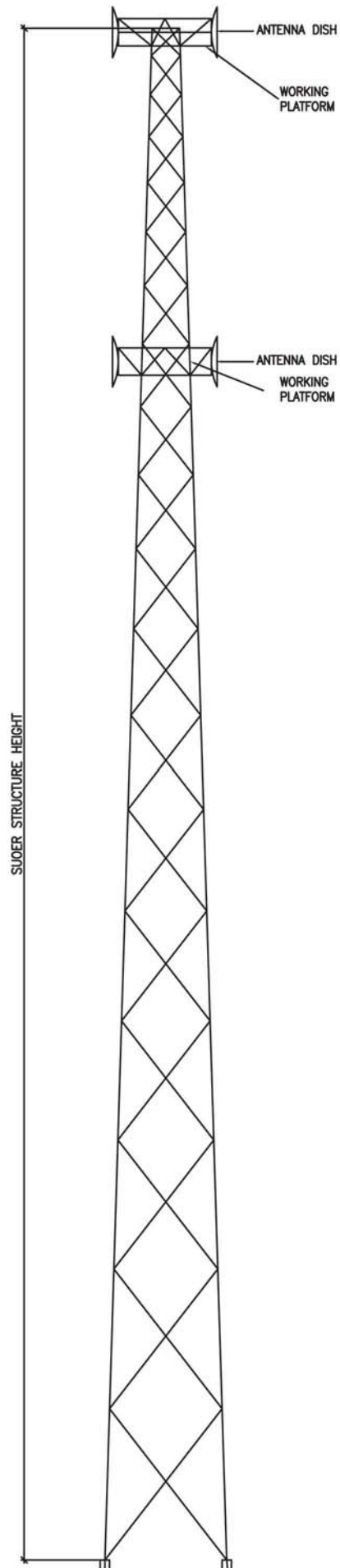
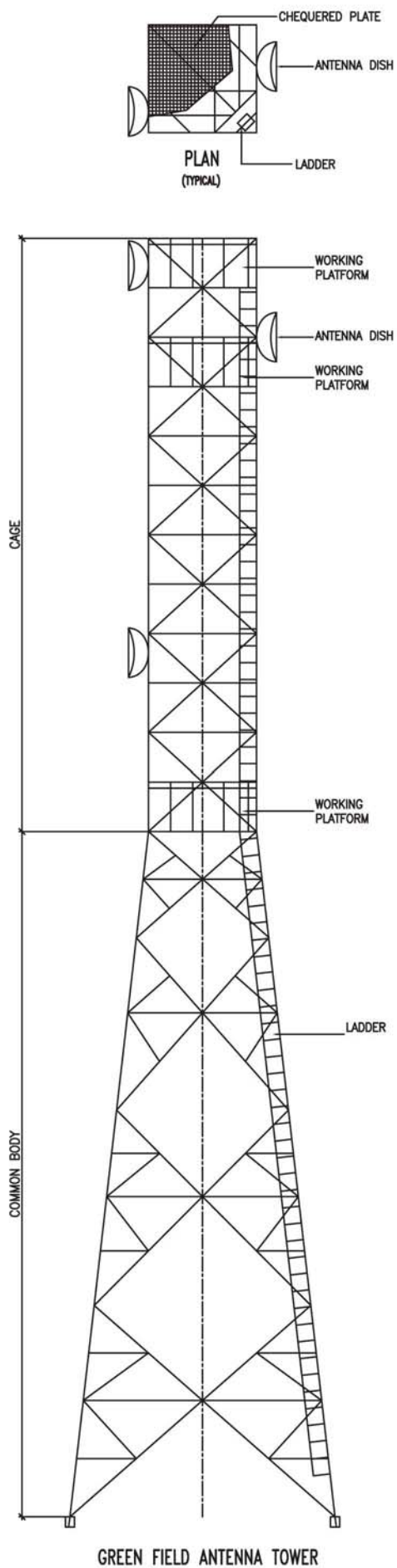


ROOF TOP ANTENNA TOWER

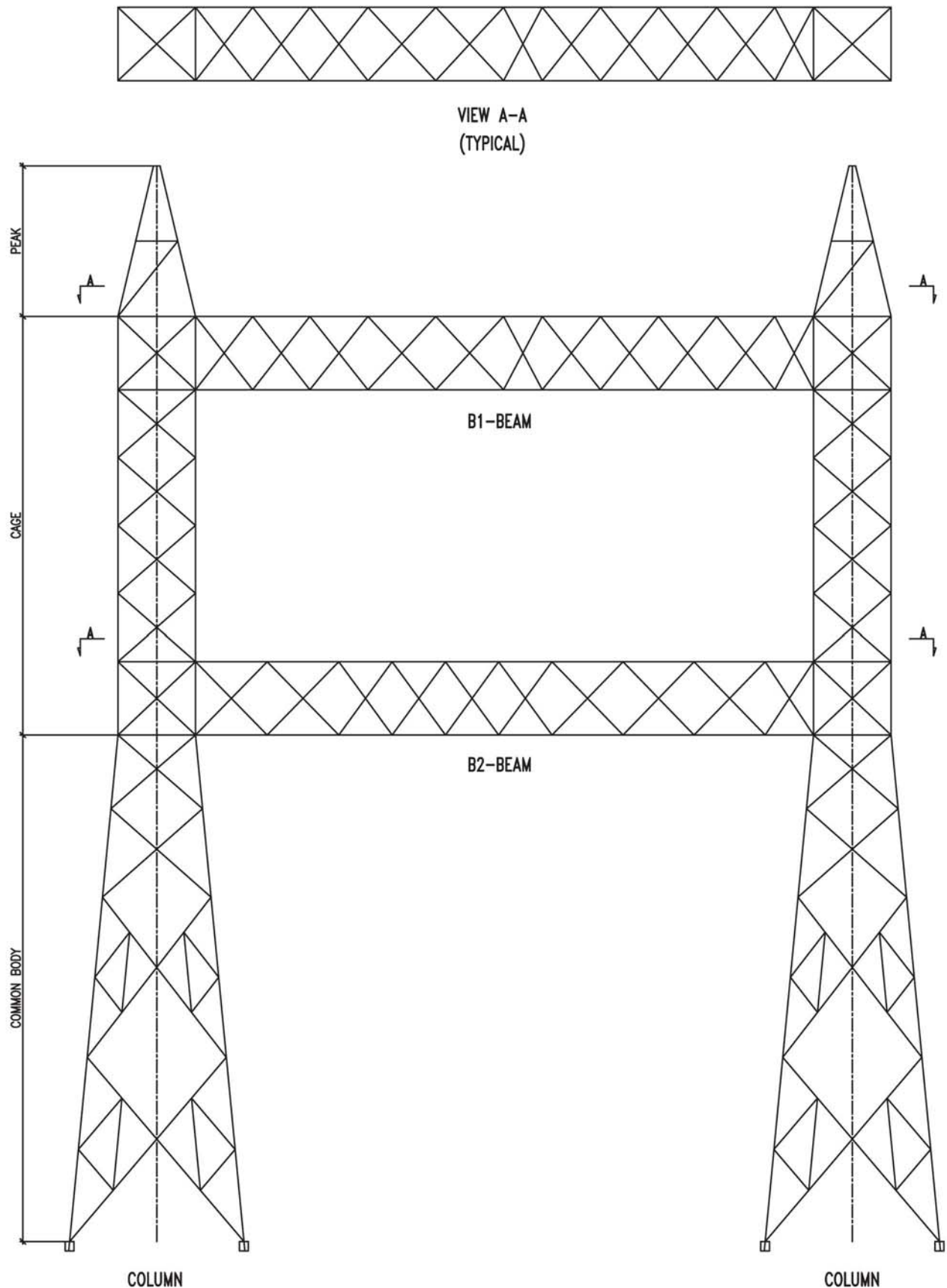


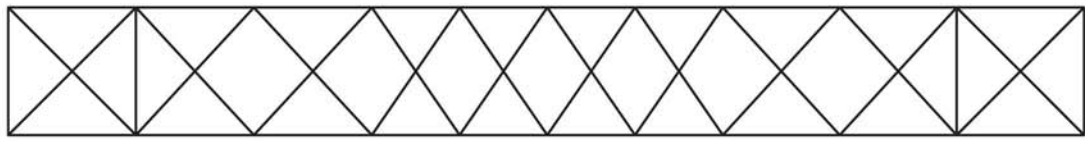
NOTES:

1. ALL DIMENSION ARE IN MILLIMETERS UNLESS OTHERWISE SPECIFIED.
2. DESIGN REQUIREMENTS, TOWER DIMENSIONS, MATERIALS SPECIFICATION, AND CLEARANCES REQUIREMENTS SHALL BE IN COMPLIANCE WITH RELEVANT STANDARDS PROVIDED BY CUSTOMERS

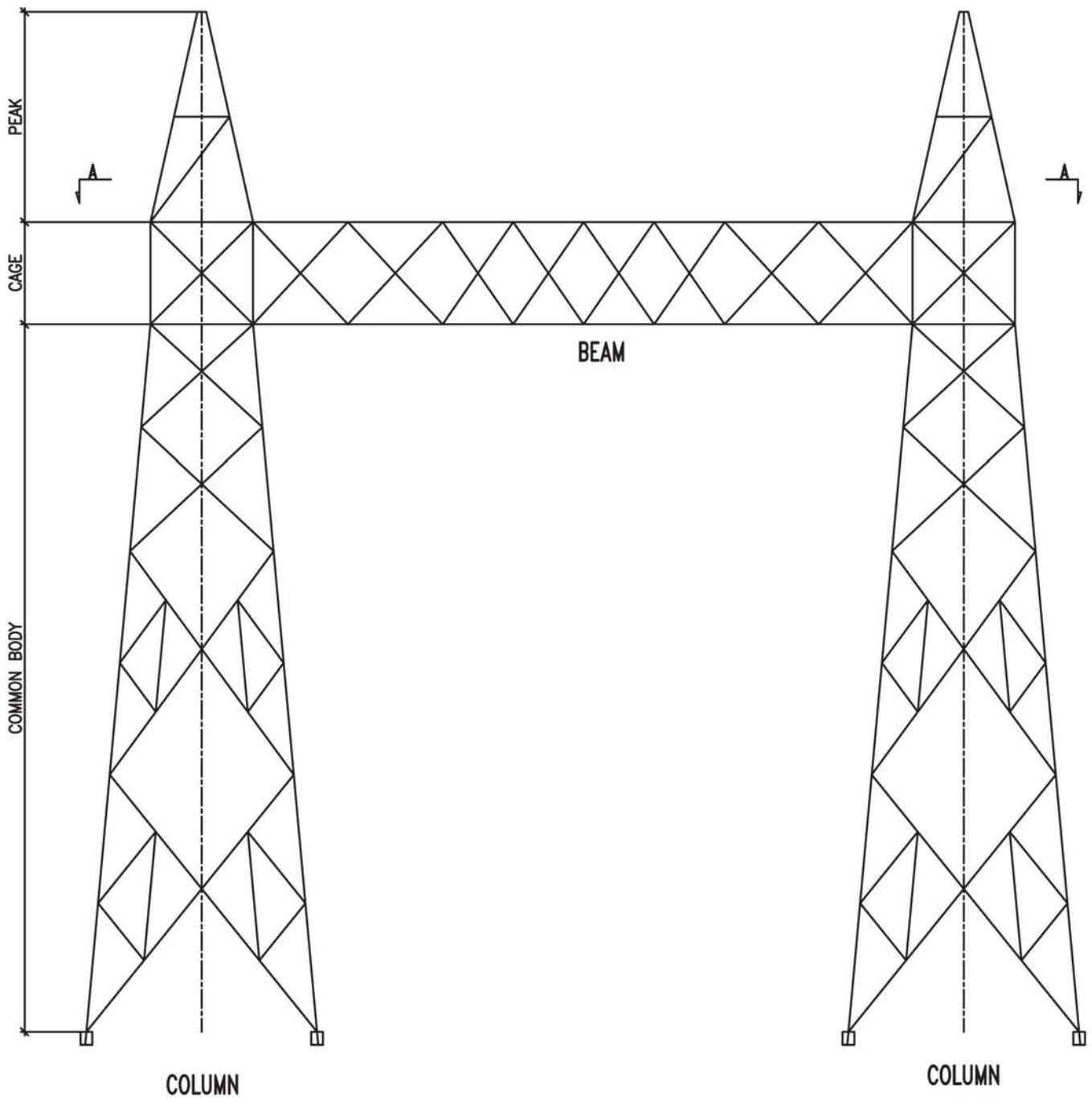


Gantry's Configuration



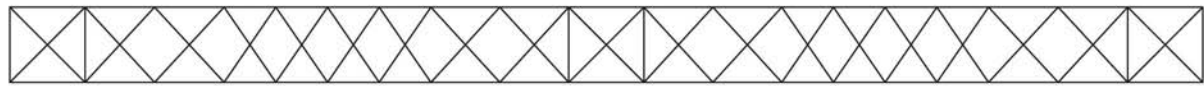


VIEW A-A



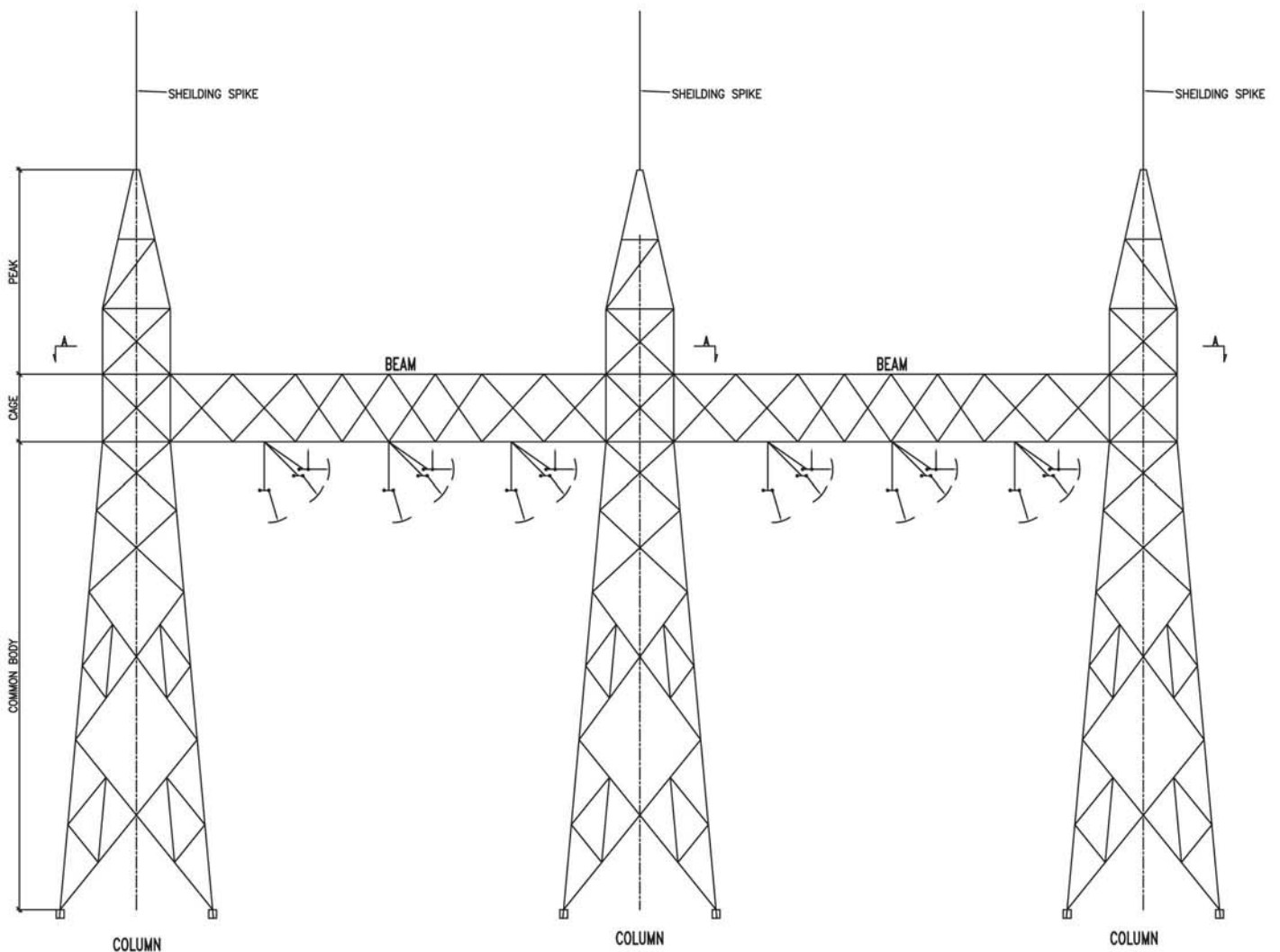
GANTRY WITH SINGLE BEAM

Double Circuit Configuratio Towers Gantry Structure



VIEW A-A

A-A VIEW

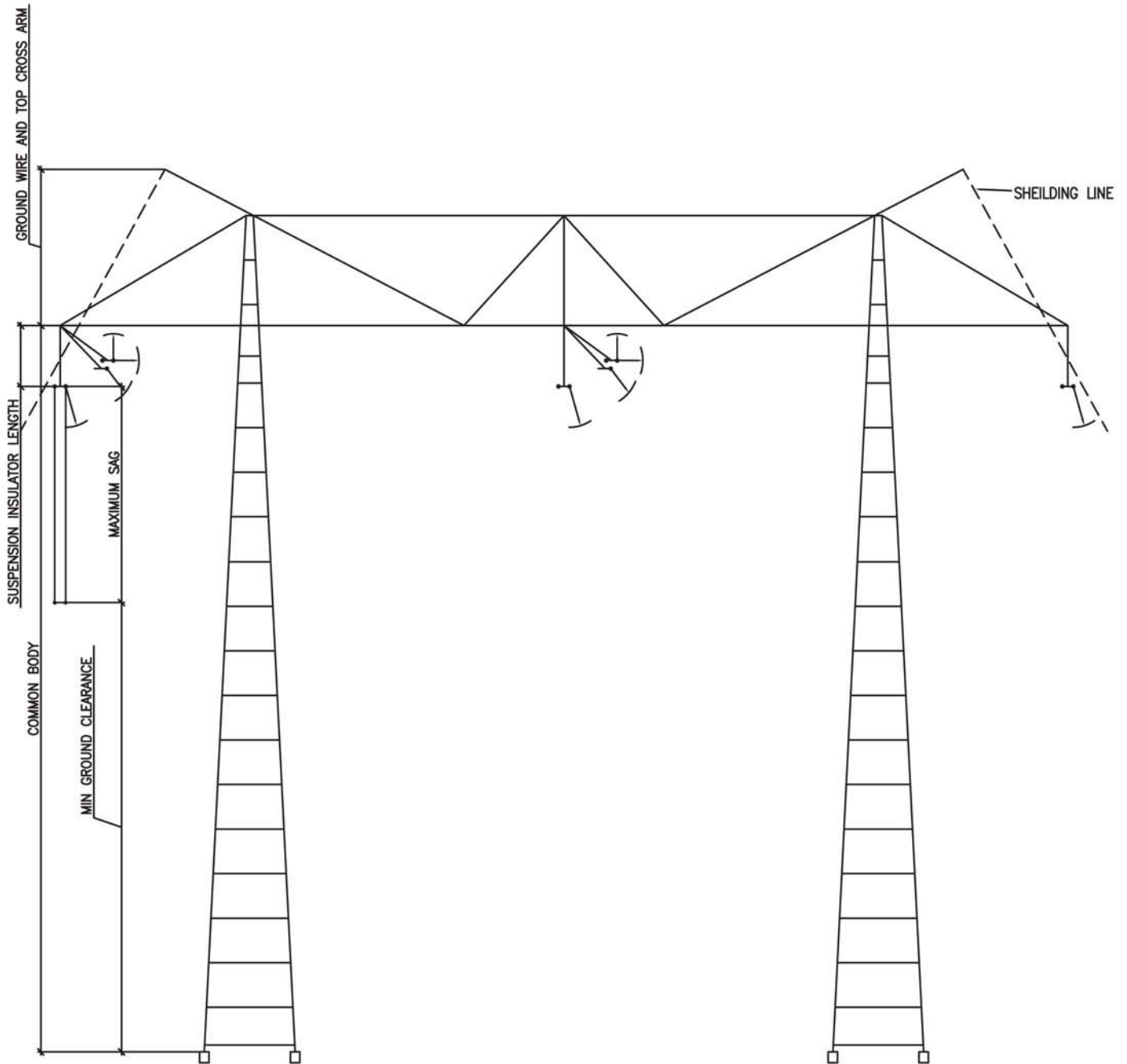


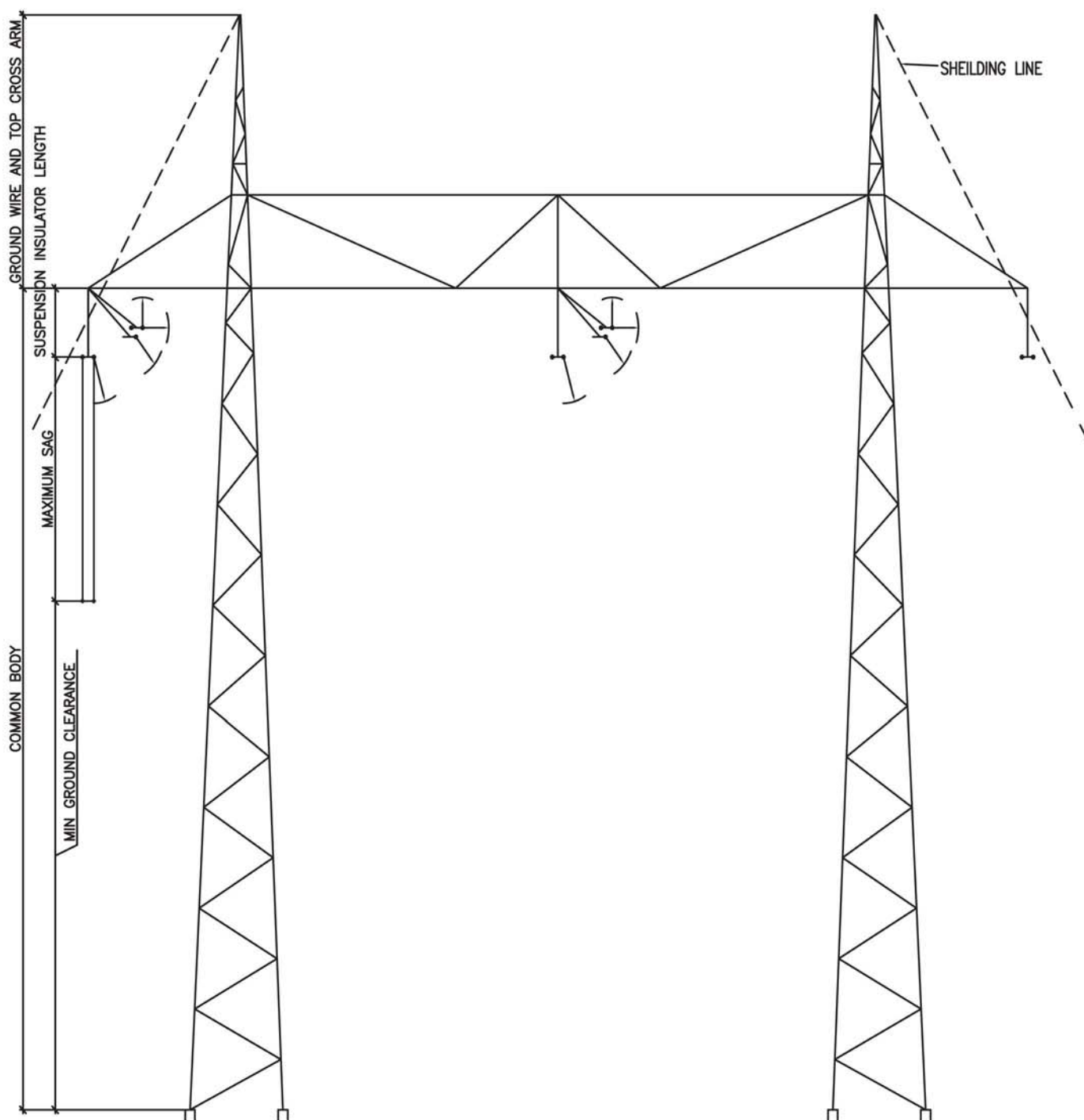
NOTES:

1. ALL DIMENSION ARE IN MILLIMETERS UNLESS OTHERWISE SPECIFIED.
2. DESIGN REQUIREMENTS, TOWER DIMENSIONS, MATERIALS SPECIFICATION, AND CLEARANCES REQUIREMENTS SHALL BE IN COMPLIANCE WITH SAUDI ELECTRIC COMPANY STANDARDS "SEC" AND OTHER RELEVANT STANDARDS PROVIDED BY CUSTOMERS



Single Circuit Configuratio Towers Gantry Structure





NOTES:

1. ALL DIMENSION ARE IN MILLIMETERS UNLESS OTHERWISE SPECIFIED.
2. DESIGN REQUIREMENTS, TOWER DIMENSIONS, MATERIALS SPECIFICATION, AND CLEARANCES REQUIREMENTS SHALL BE IN COMPLIANCE WITH SAUDI ELECTRIC COMPANY STANDARDS "SEC" AND OTHER RELEVANT STANDARDS PROVIDED BY CUSTOMERS



Egypt:

Eneregya Steel Solutions.

Head Office

98(A) Hassan Ma'moun st. , Nasr City, Cairo, Egypt

Tel: (+20)2227 063 06 (+20) 2227 146 31

Mobile: (+20) 1000 619 20

Fax: (+20) 2227 527 01

Plants:

Industrial Zone, 6(A) East 10th of Ramadan City,

Egypt. Tel: (+20) 154 122 38 (+20) 154 122 39

Mobile: (+20) 165 5481 01

Fax: (+20) 154 122 36

E-mail: markegting.egypt@energyasteel.com

Saudi Arabia:

Hesham Helal El Sewedy & Partners for Steel Industries Co.

Head Office

King A. Aziz Road, Haif Building , Jeddah, Saudi Arabia

P.o.Box: 122747 Post Code 21332

Tel: (+966) 2654 6999

Fax: (+966) 2654 6999 Ext. (120)

Plants:

Yanbu high Way Exit 927, Industrial Zone, Aramco Road,

Rabigh, Saudi Arabia

Tel: (+966) 500 150 706

E-mail: markegting.ksa@energyasteel.com